

SD14b

YOUR PLACE YOUR PLAN.

Winchester District Local Plan

Schedule of Proposed Modifications
Appendix 1

November 2024

Background

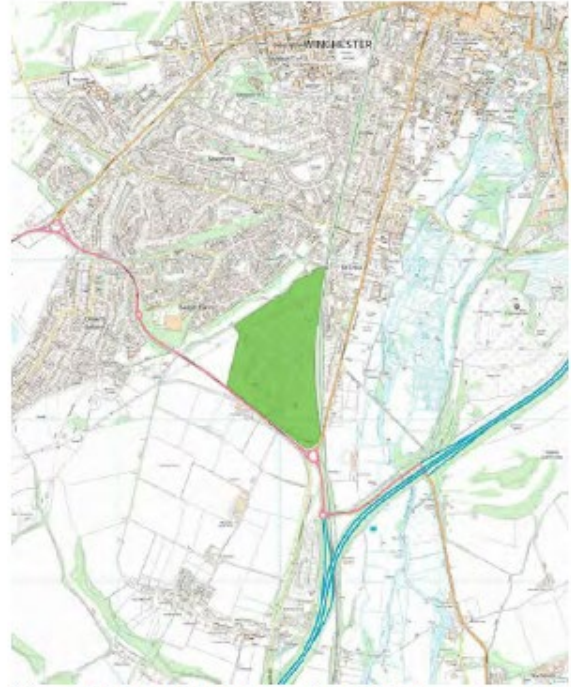
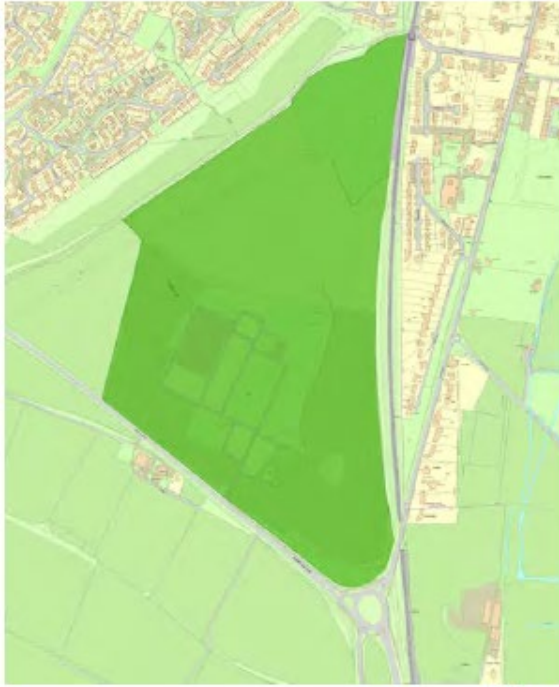
South Downs National park Regulation 19 consultation response regarding inset maps:

We request that the boundary of SDNP is added to the inset maps, site plans and wider context plans for Policies W5, W6, W9, W10, BW3, BW4, KW2, CC2, CC3, WK1, WK5, WK6, and OT01 . This will assist applicants and case officers in understanding the relationship of the settlement and/or site within the setting of the SDNP.

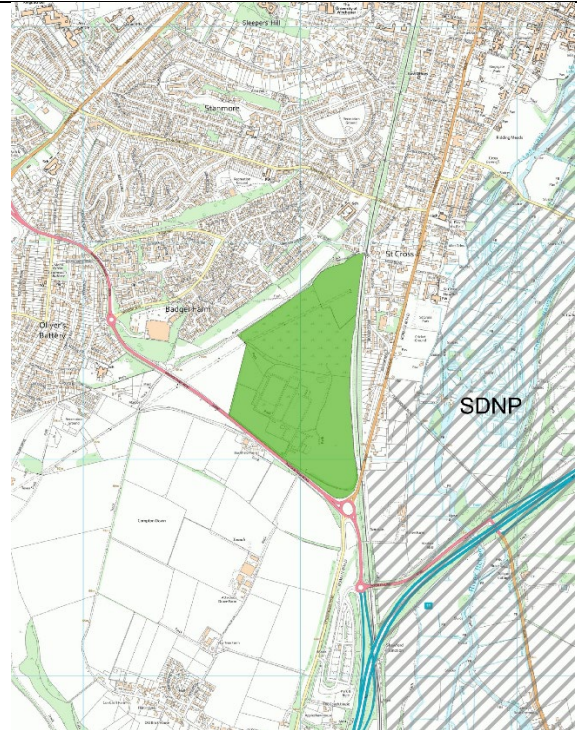
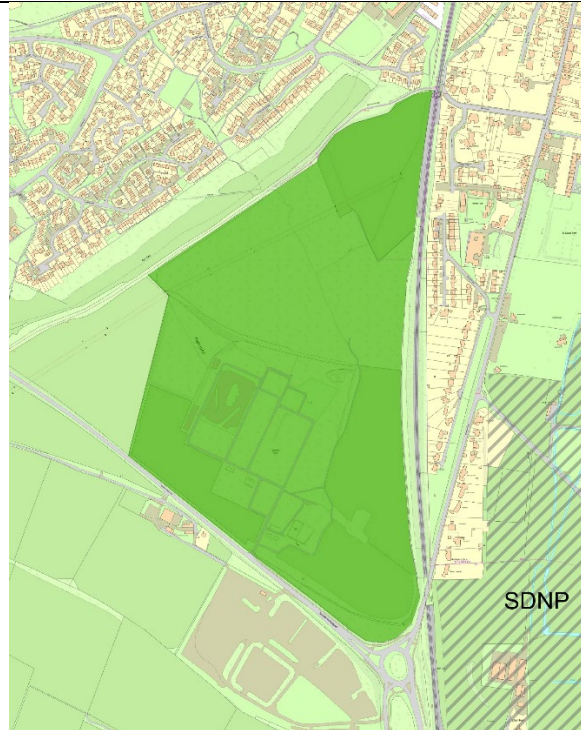
This document outlines proposed modifications to some of the Regulation 19 Local Plan inset maps in response to feedback from the South Downs National Park (SDNP) Authority. Based on their comments, the SDNP boundary will be added to relevant inset maps, site plans, and wider context maps for Policies listed in the SDNP representation. This update is intended to clearly show the proximity of the Local Plan allocations in relation to the SDNP's setting.

WINCHESTER

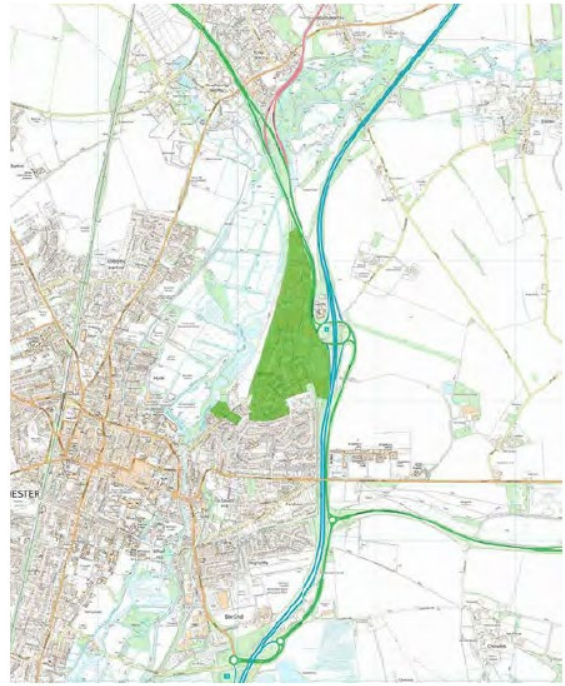
W5 Reg 19 (page 331 in the Local Plan)



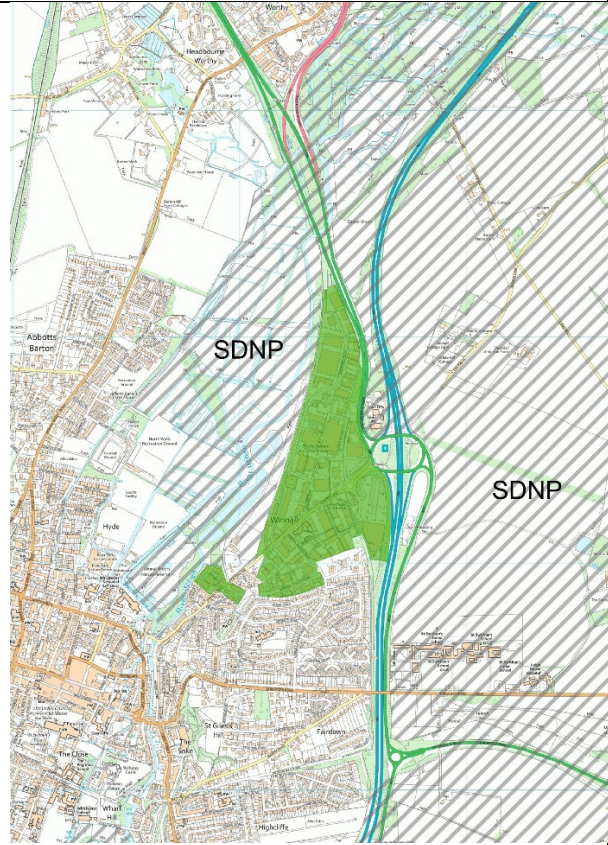
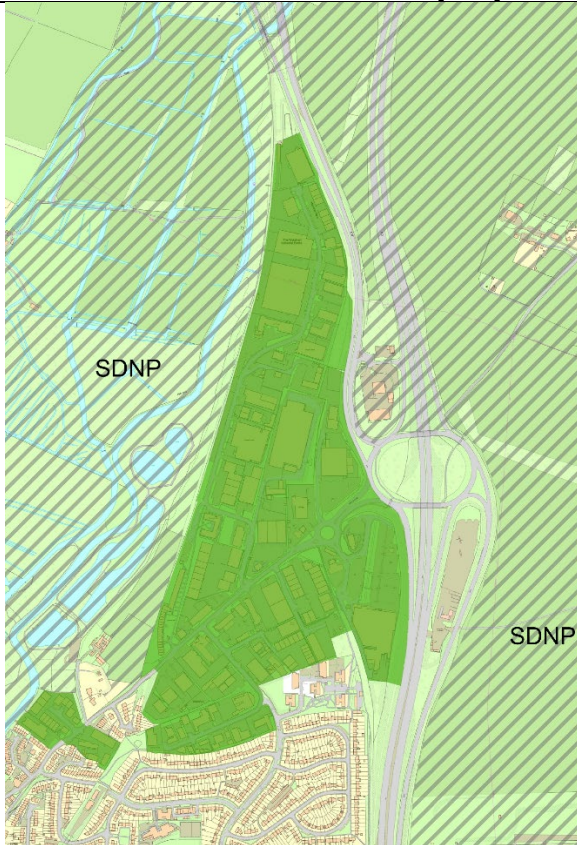
W5 proposed modification



W6 (page 337 in the Local Plan)



W6 proposed modification

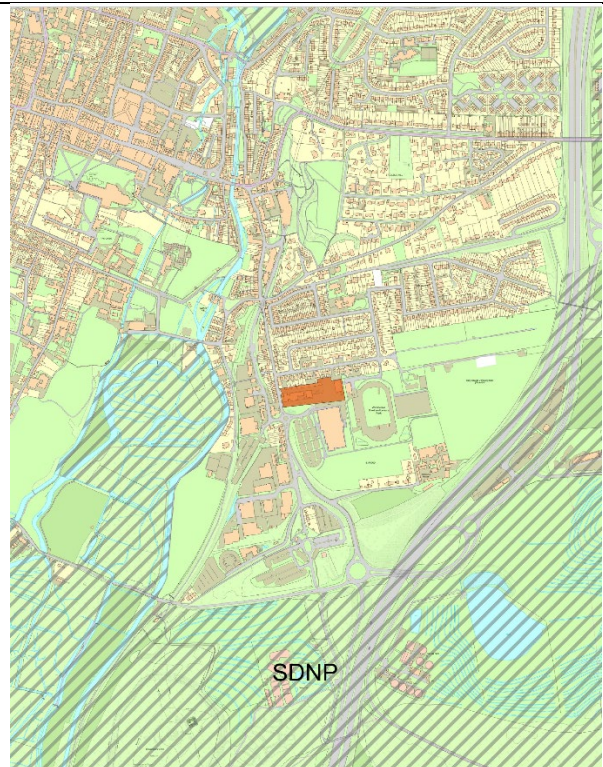


W9 Reg 19 (page 355 in the Local Plan)



W9 proposed modification

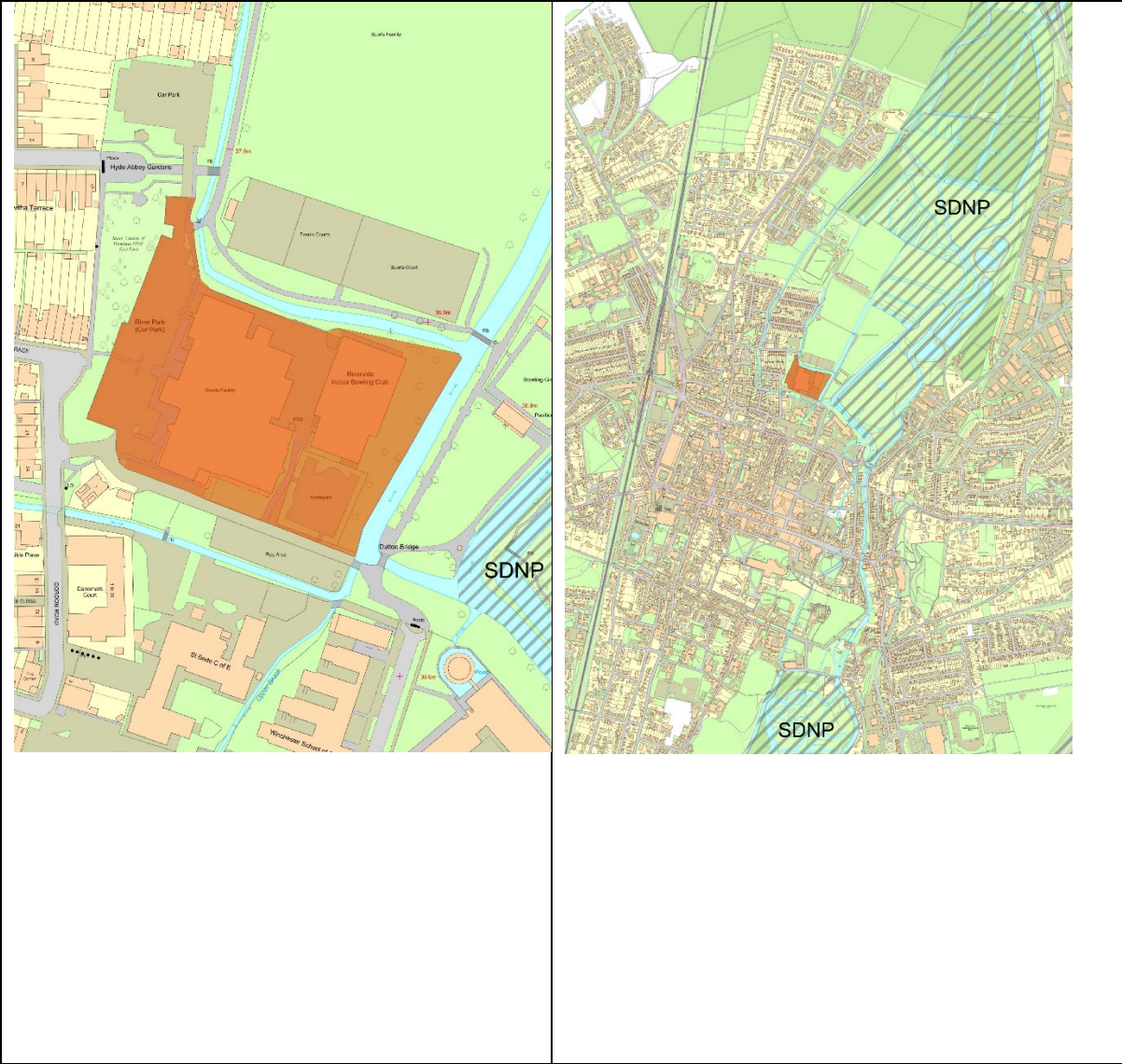
No change
SDNP boundary not visible at this scale



W10 Reg 19 (page 355 in the Local Plan)



W10 proposed modification



BISHOPS WALTHAM

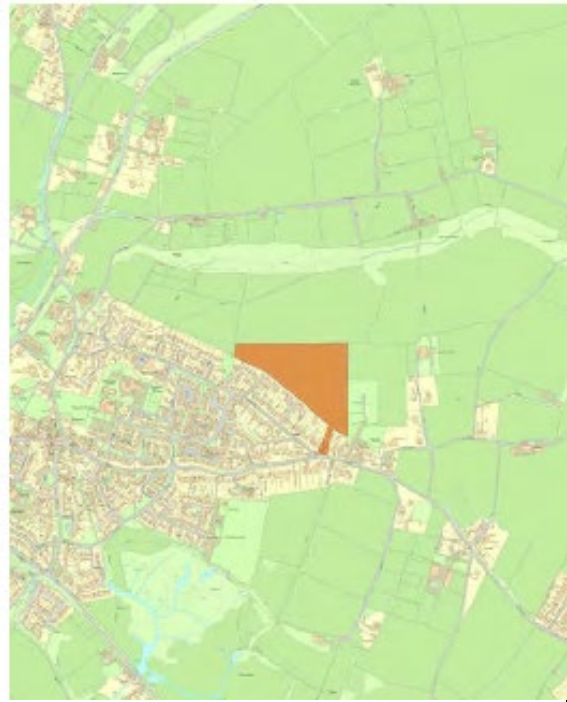
BW3 Reg 19 (page 397 in the Local Plan)



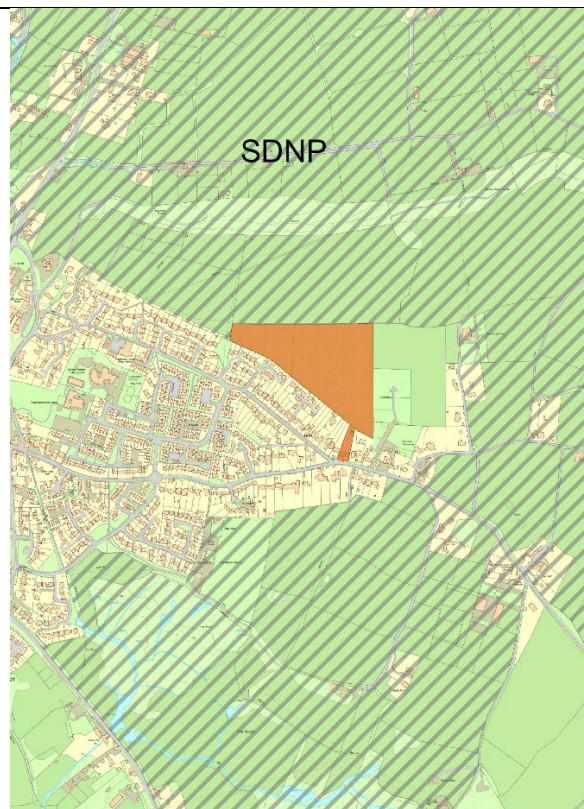
BW3 Proposed modification



BW4 Reg 19 (page 401 in the Local Plan)



BW4 Proposed modification

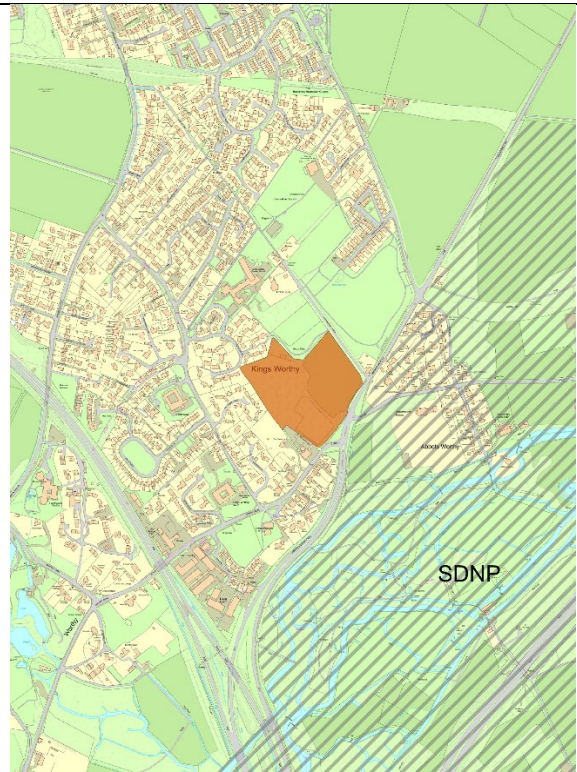
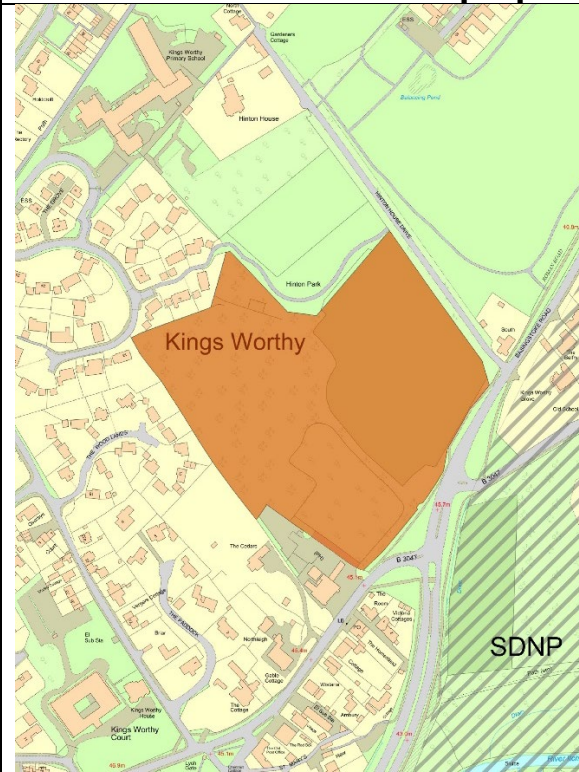


KINGS WORTHY

KW2 Reg 19 (page 443 in the Local Plan)



KW2 proposed modification

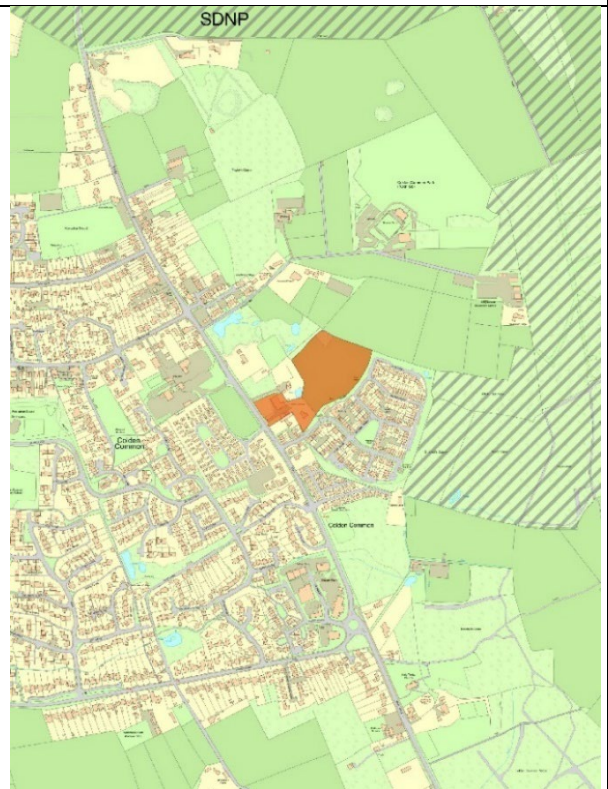


COLDEN COMMON

CC2 Reg 19 (page 423 in the Local Plan)



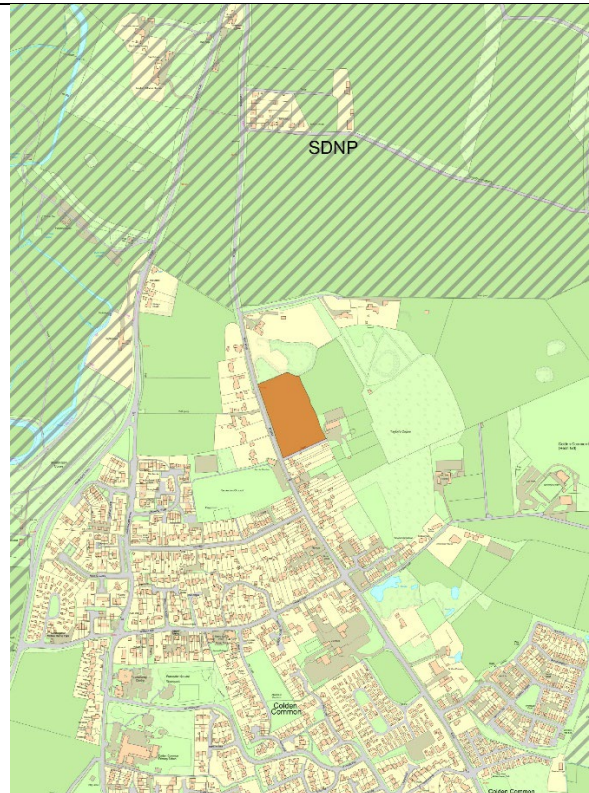
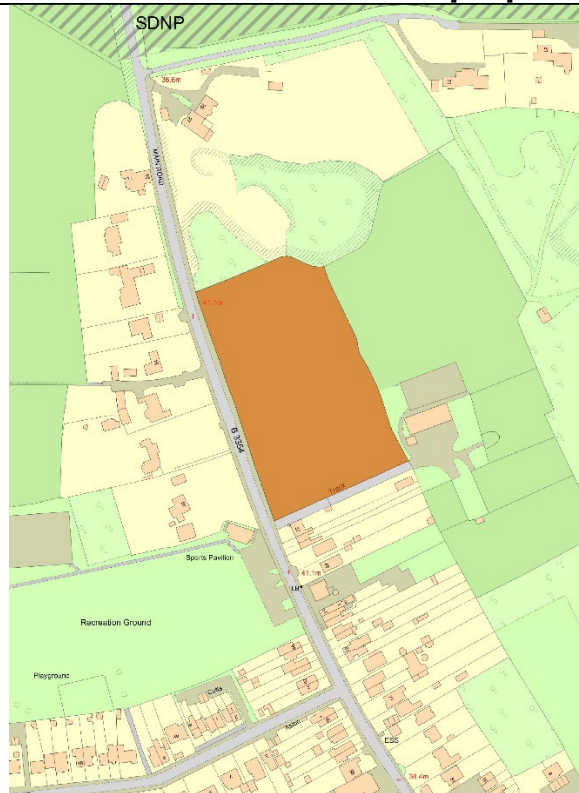
CC2 proposed modification



CC3 Reg 19 (page 427 in the Local Plan)



CC3 proposed modification

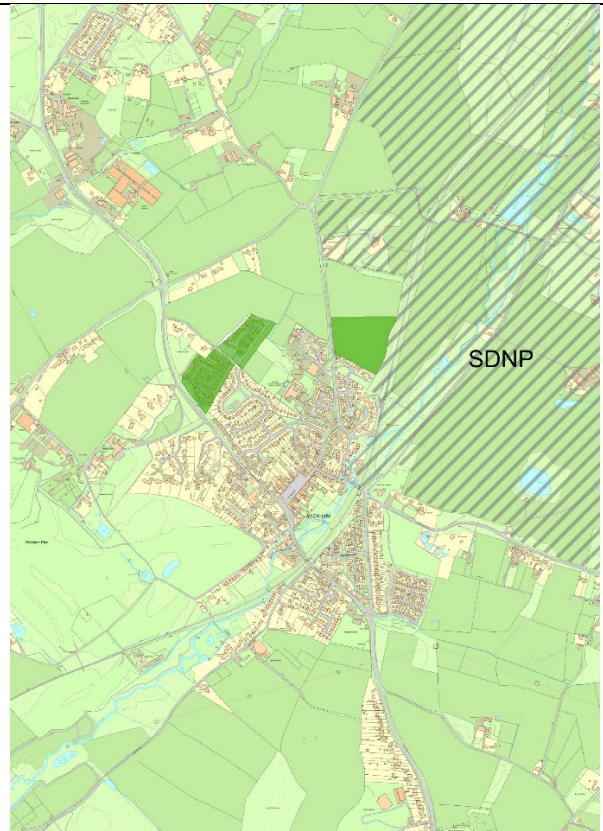
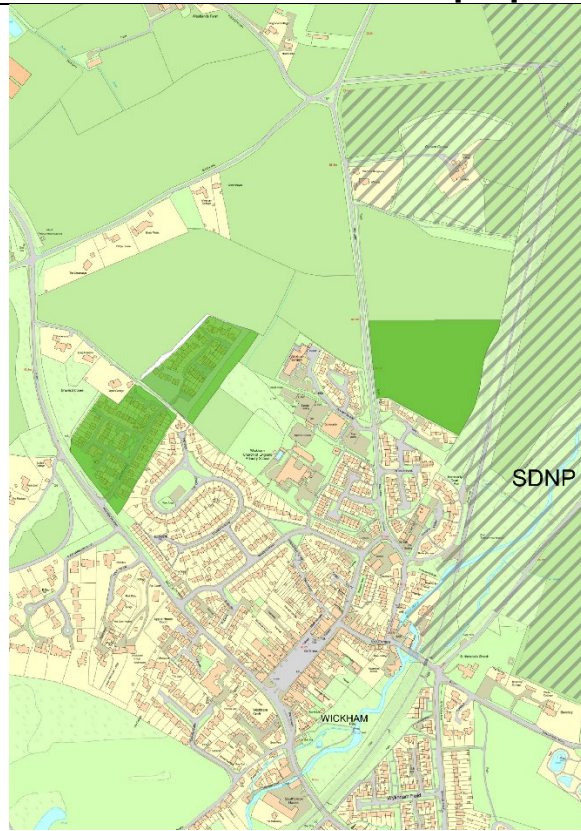


WICKHAM

WK1 reg 19 (page 455 in the Local Plan)



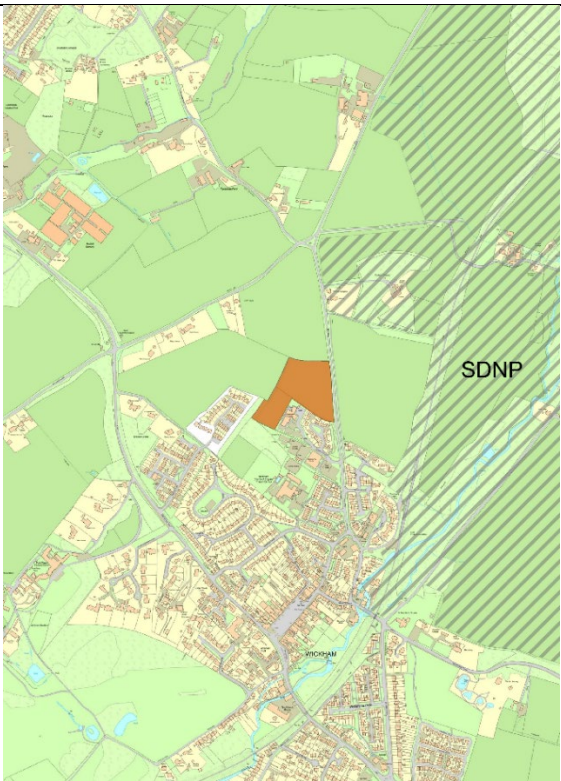
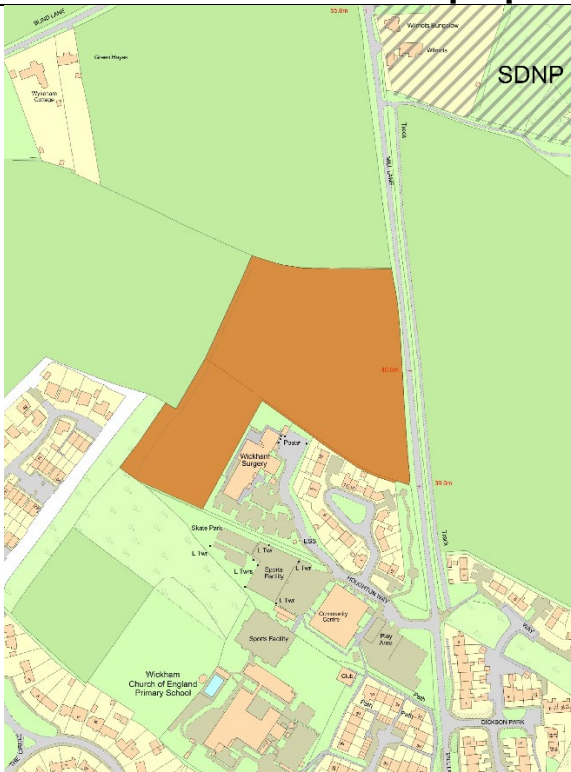
WK1 proposed modification



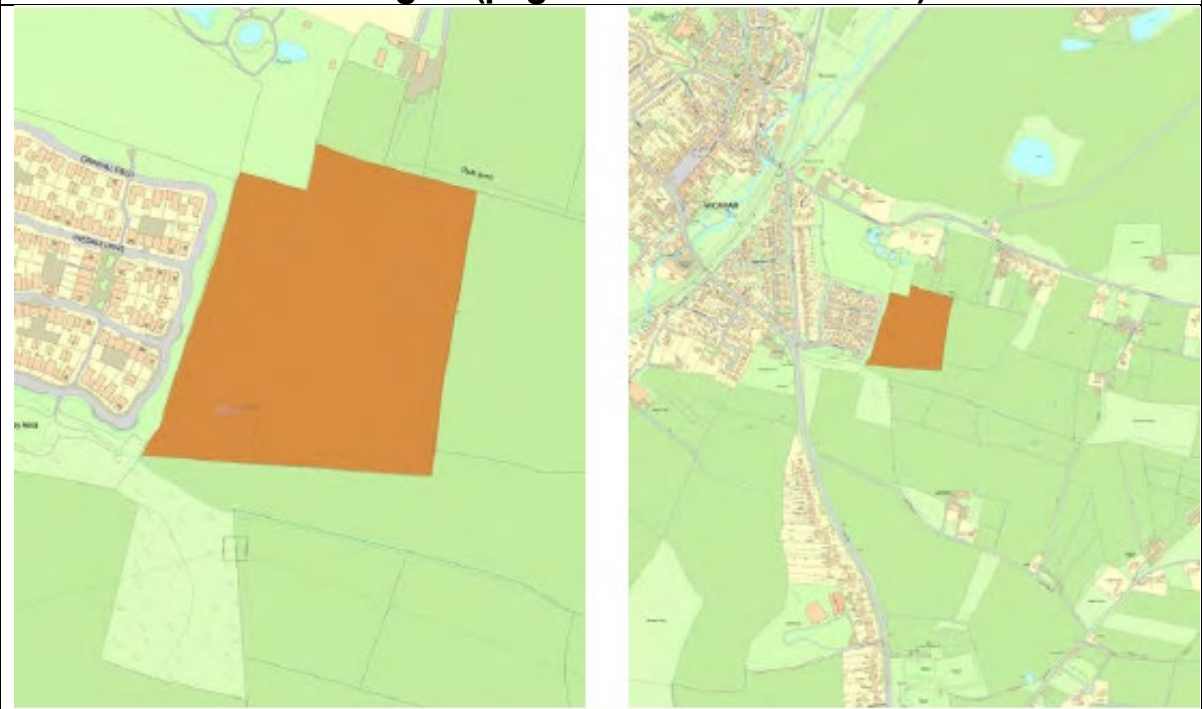
WK5 reg 19 (page 461 in the Local Plan)



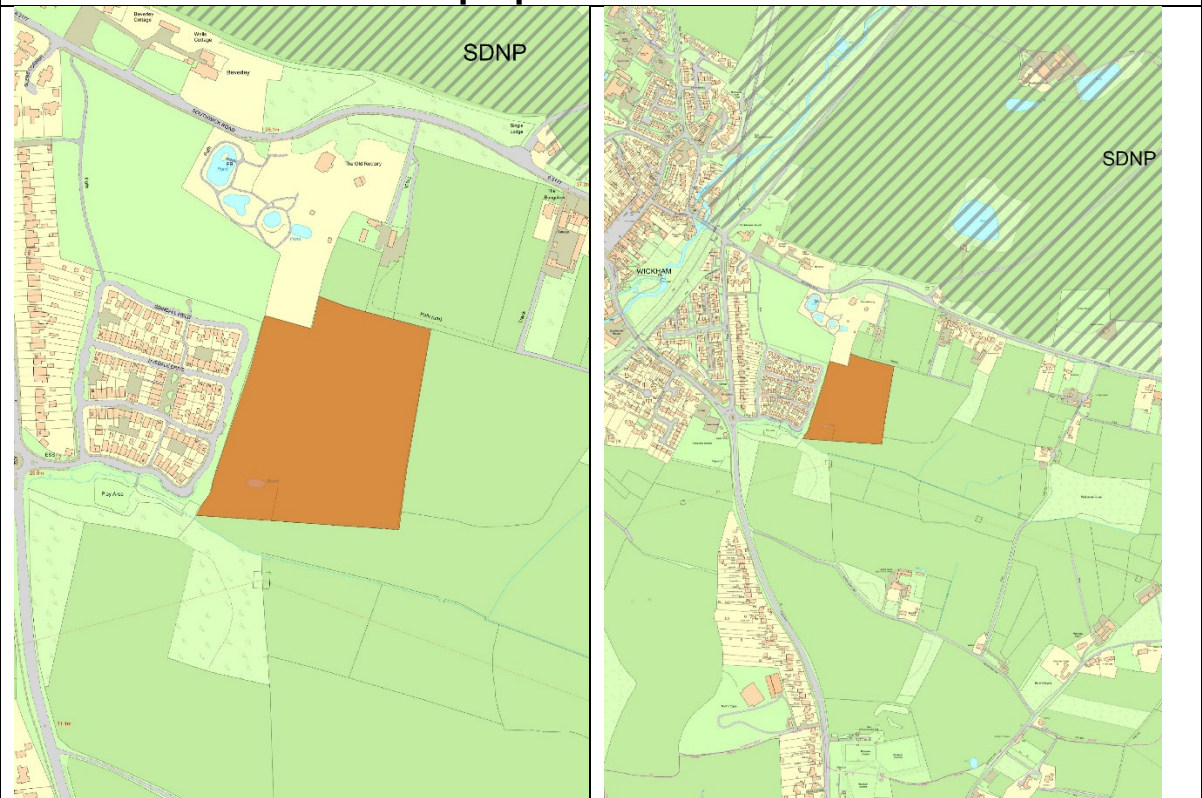
WK5 proposed modification



WK6 reg 19 (page 465 in the Local Plan)



WK6 proposed modification



OTTERBOURNE

OT01 Reg 19 (page 479 in the Local Plan)



OT01 proposed modification

No change
SDNP boundary not visible at this scale

