

SD14b

YOUR PLACE YOUR PLAN.

Winchester District Local Plan

Schedule of Proposed Modifications
Appendix 1

November 2024

Background

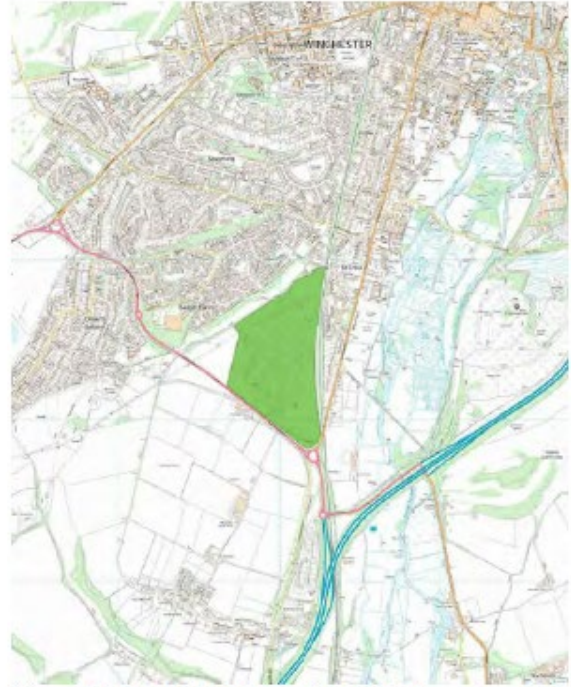
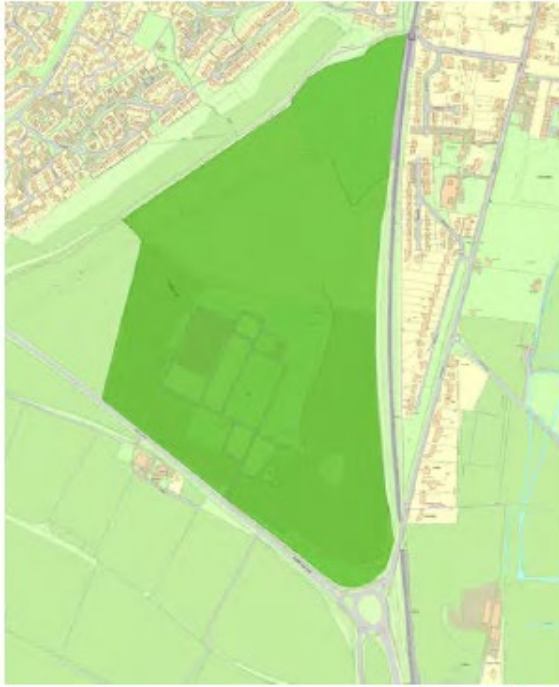
South Downs National park Regulation 19 consultation response regarding inset maps:

We request that the boundary of SDNP is added to the inset maps, site plans and wider context plans for Policies W5, W6, W9, W10, BW3, BW4, KW2, CC2, CC3, WK1, WK5, WK6, and OT01 . This will assist applicants and case officers in understanding the relationship of the settlement and/or site within the setting of the SDNP.

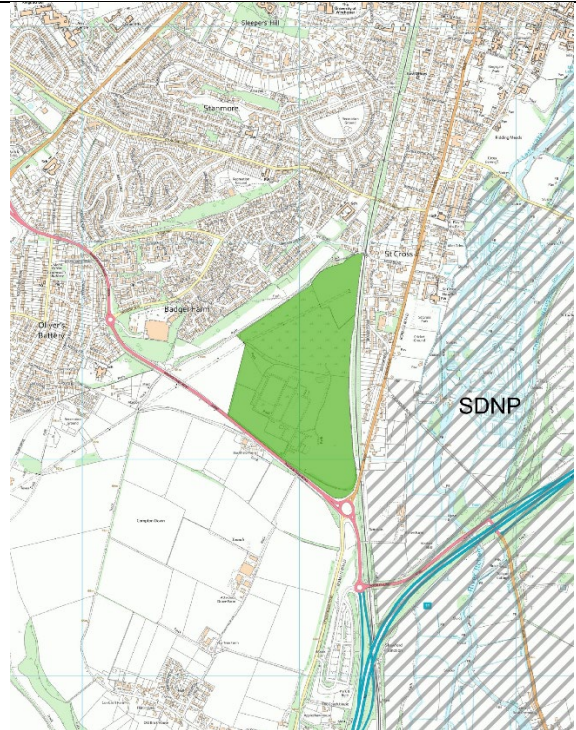
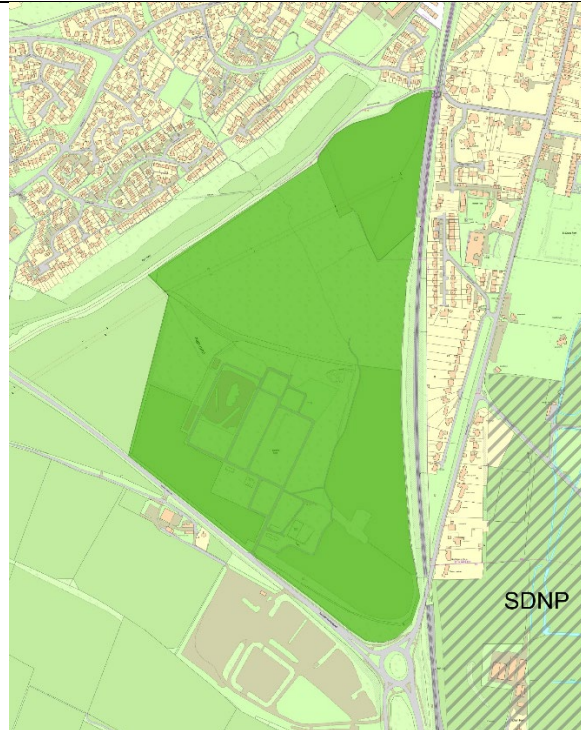
This document outlines proposed modifications to some of the Regulation 19 Local Plan inset maps in response to feedback from the South Downs National Park (SDNP) Authority. Based on their comments, the SDNP boundary will be added to relevant inset maps, site plans, and wider context maps for Policies listed in the SDNP representation. This update is intended to clearly show the proximity of the Local Plan allocations in relation to the SDNP's setting.

WINCHESTER

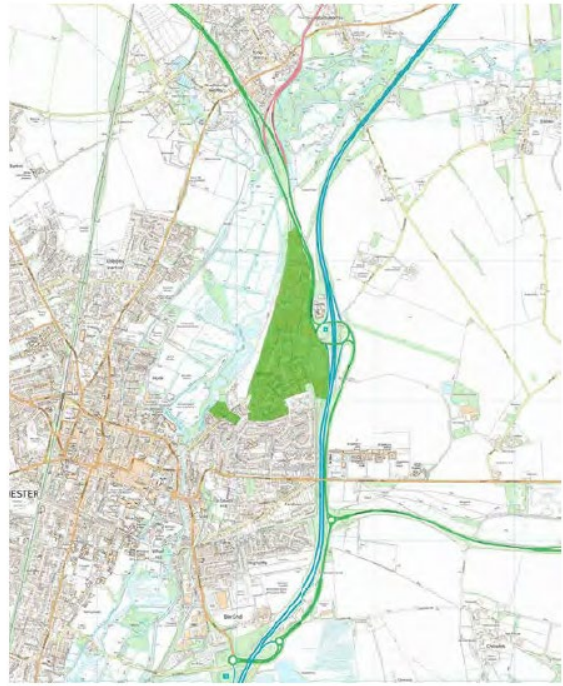
W5 Reg 19 (page 331 in the Local Plan)



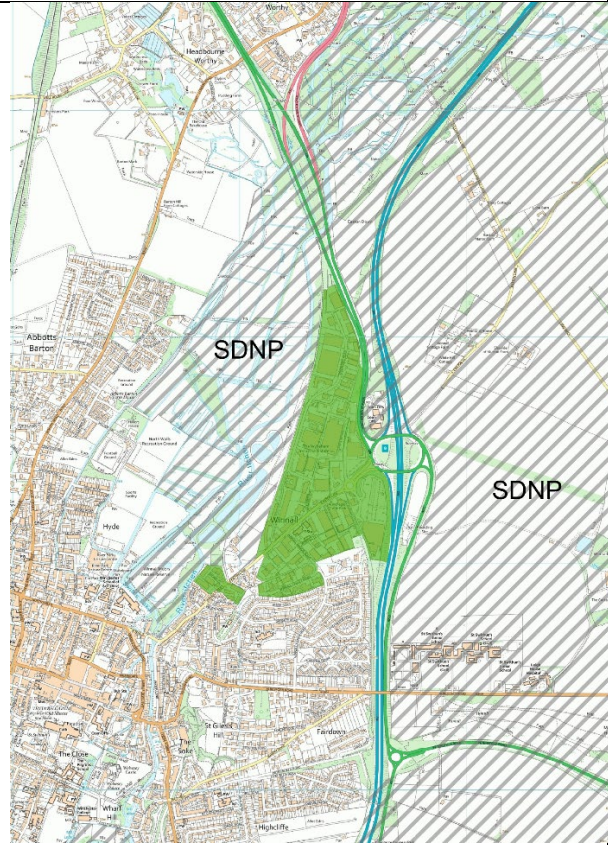
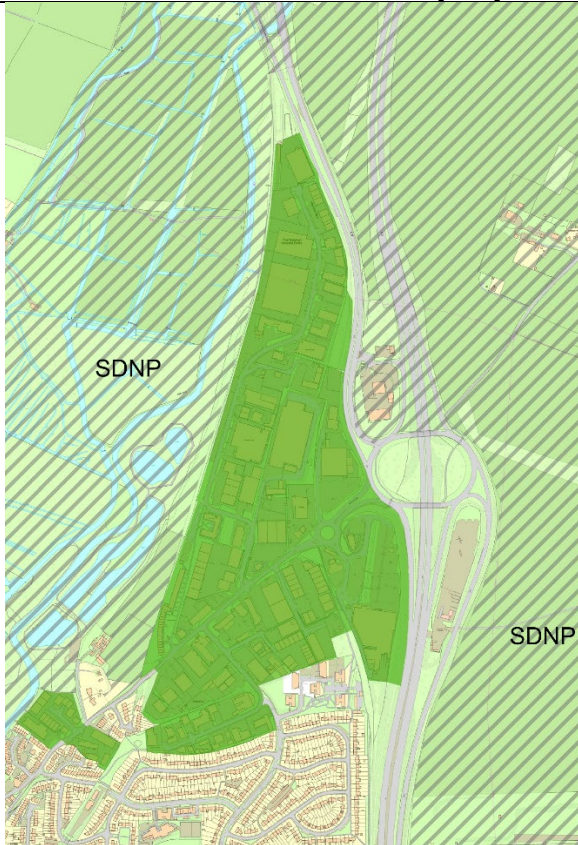
W5 proposed modification



W6 (page 337 in the Local Plan)



W6 proposed modification

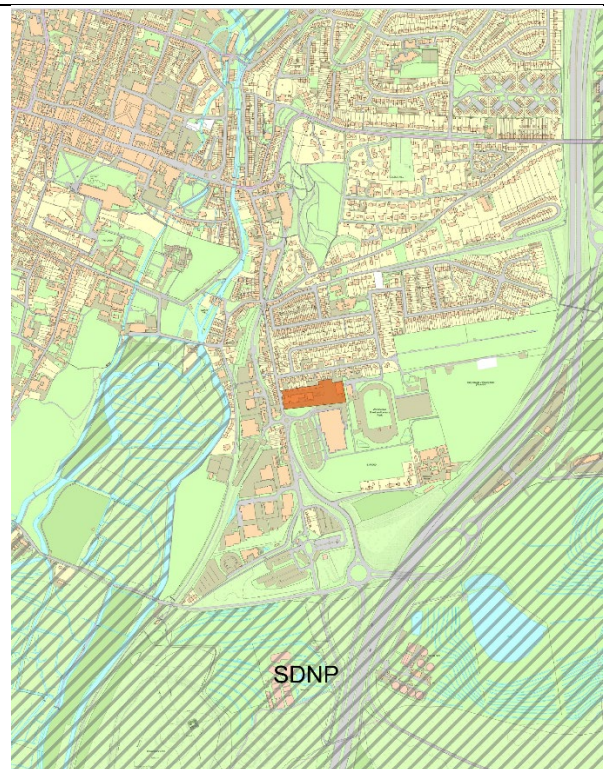


W9 Reg 19 (page 355 in the Local Plan)



W9 proposed modification

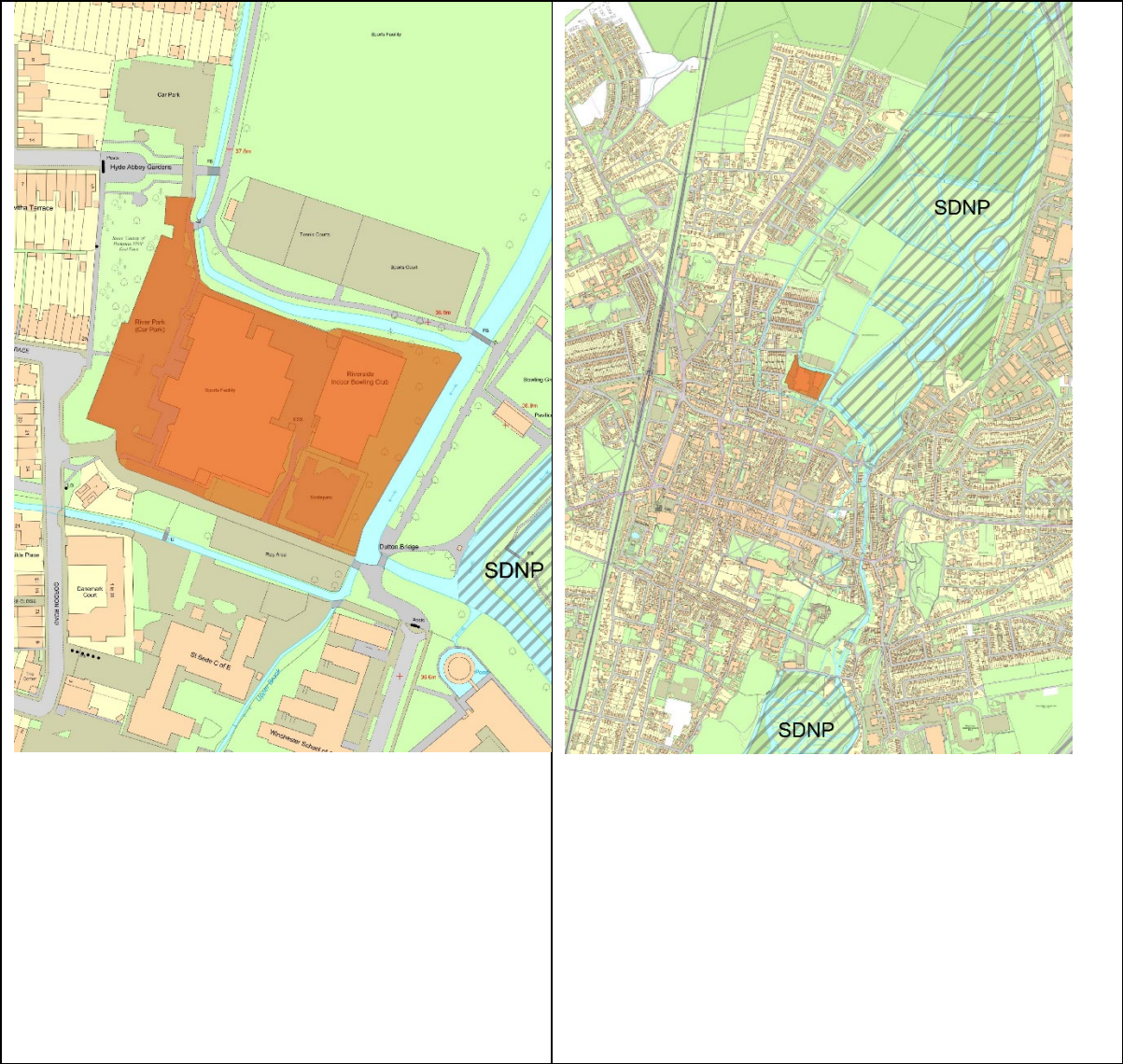
No change
SDNP boundary not visible at this scale



W10 Reg 19 (page 355 in the Local Plan)



W10 proposed modification



BISHOPS WALTHAM

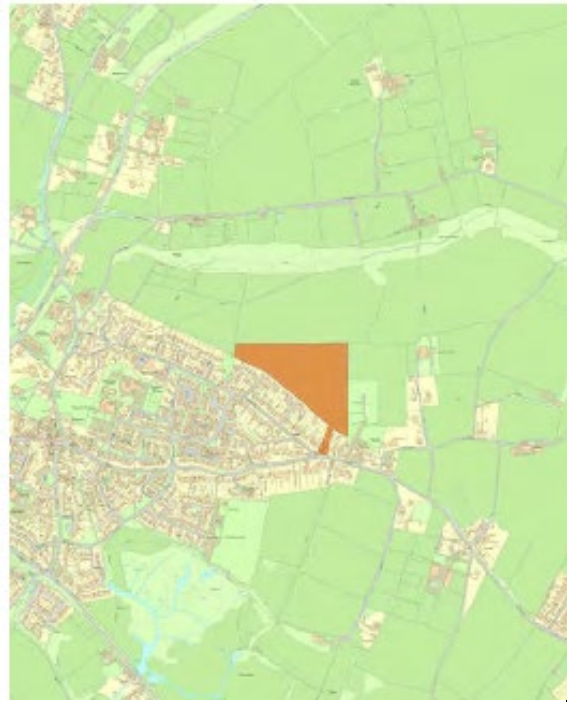
BW3 Reg 19 (page 397 in the Local Plan)



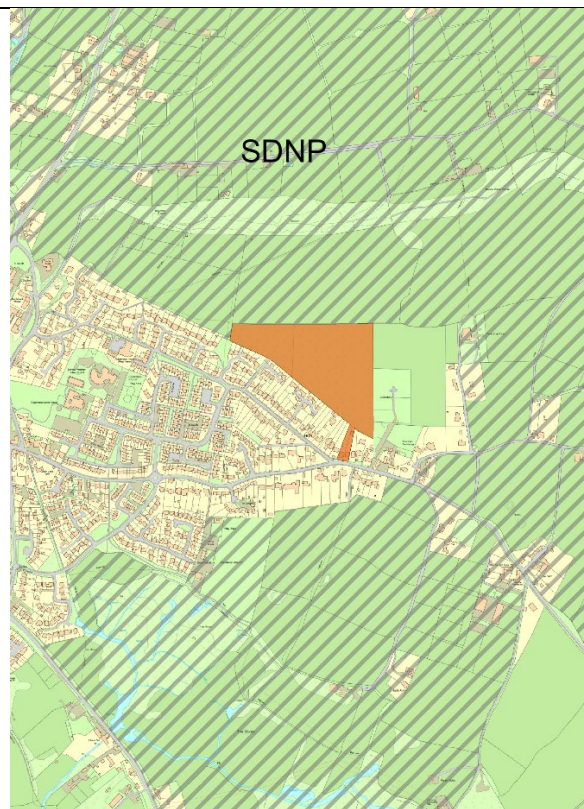
BW3 Proposed modification



BW4 Reg 19 (page 401 in the Local Plan)



BW4 Proposed modification

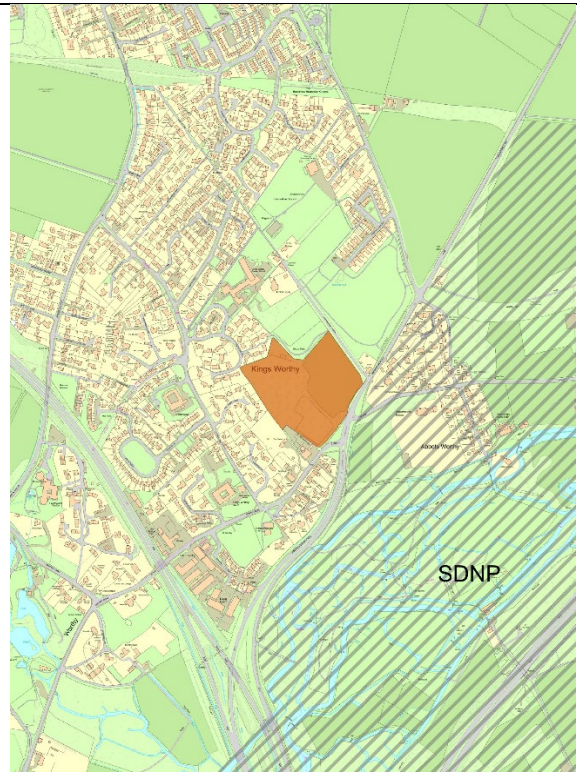
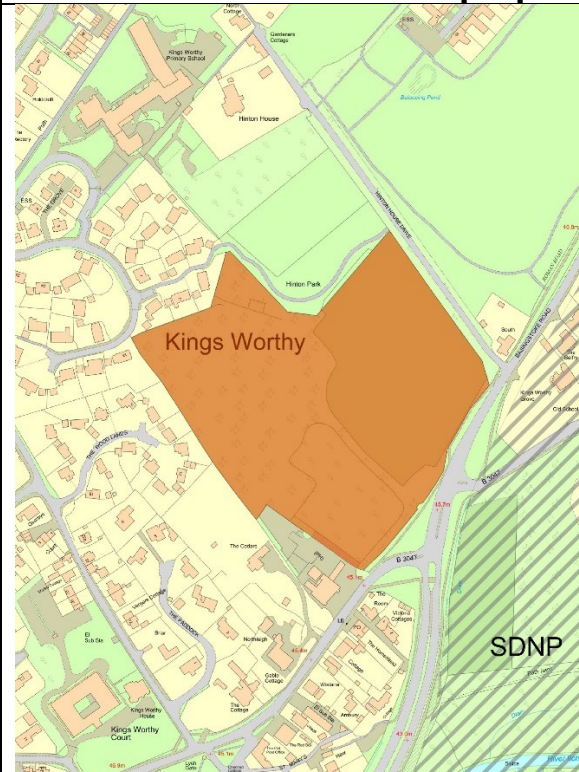


KINGS WORTHY

KW2 Reg 19 (page 443 in the Local Plan)



KW2 proposed modification

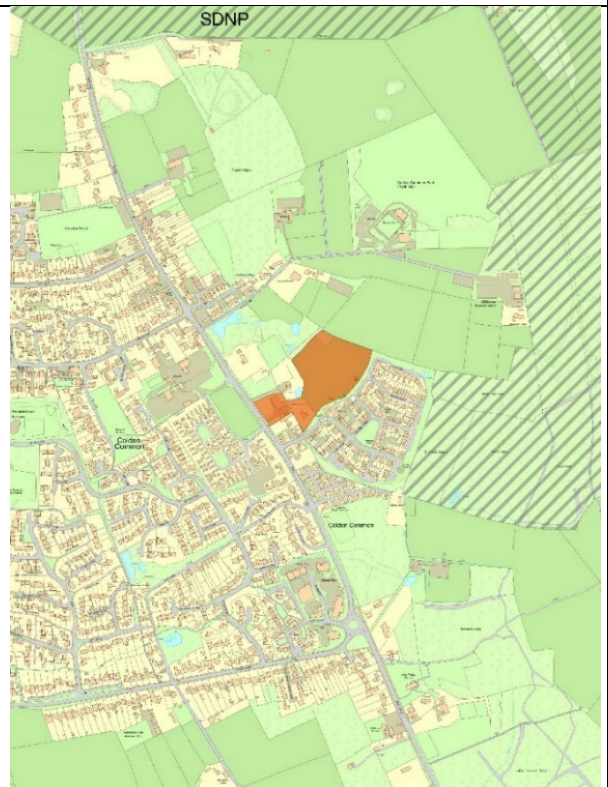


COLDEN COMMON

CC2 Reg 19 (page 423 in the Local Plan)



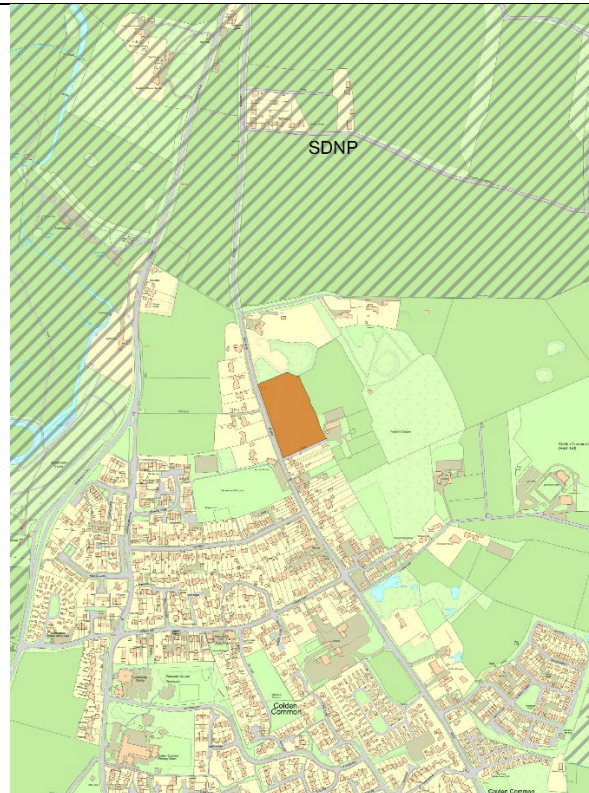
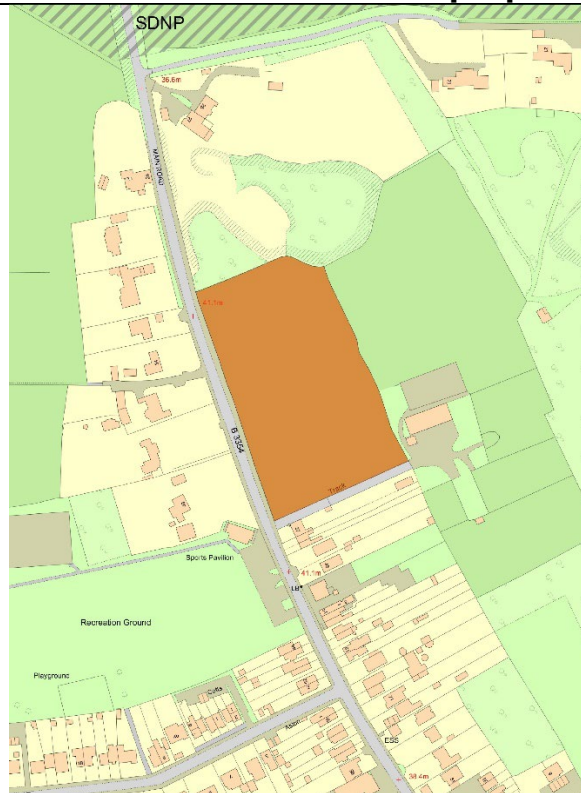
CC2 proposed modification



CC3 Reg 19 (page 427 in the Local Plan)



CC3 proposed modification

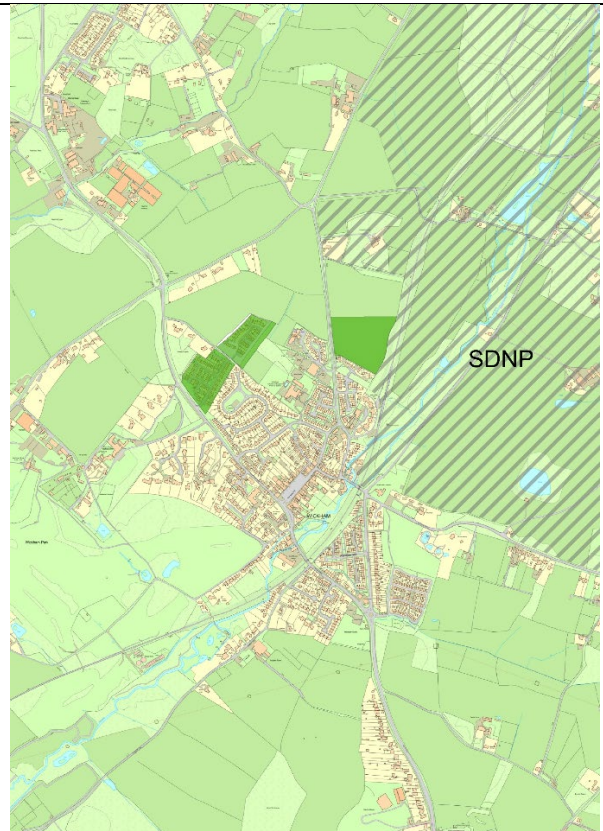
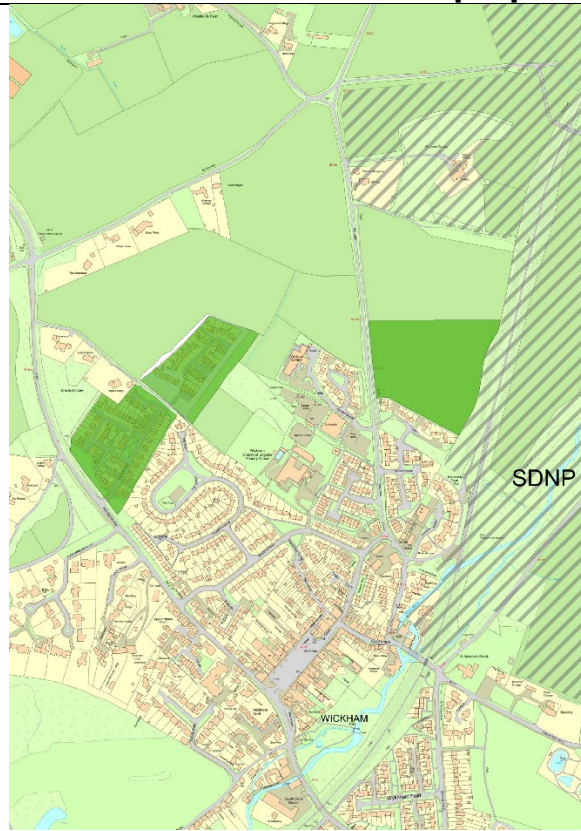


WICKHAM

WK1 reg 19 (page 455 in the Local Plan)



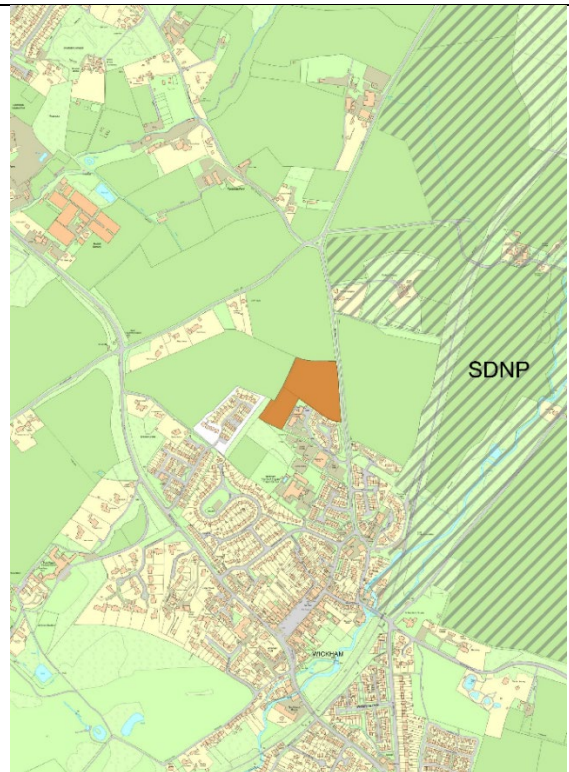
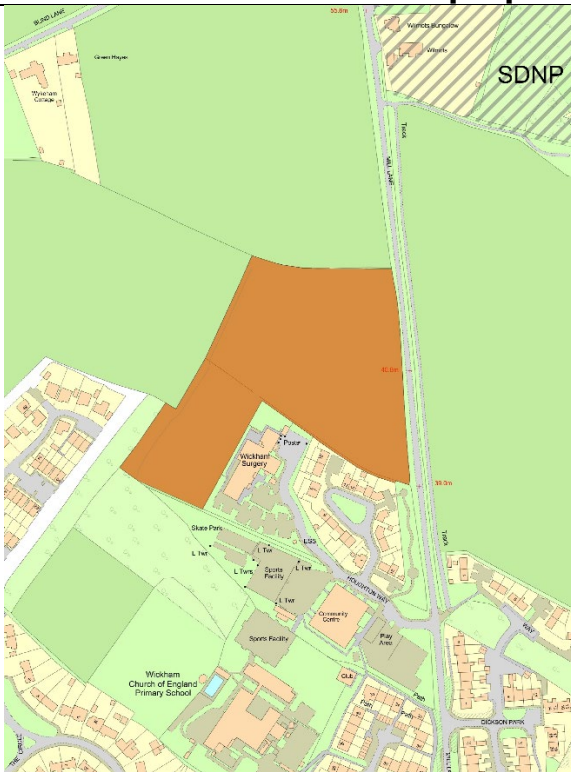
WK1 proposed modification



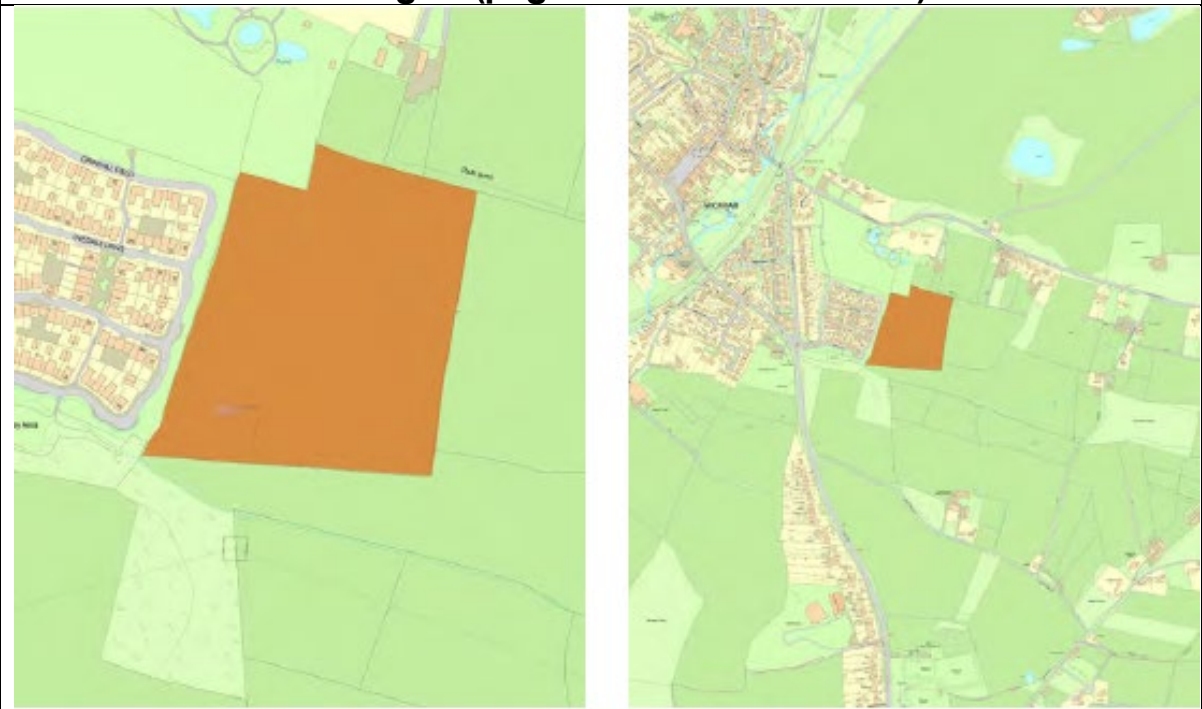
WK5 reg 19 (page 461 in the Local Plan)



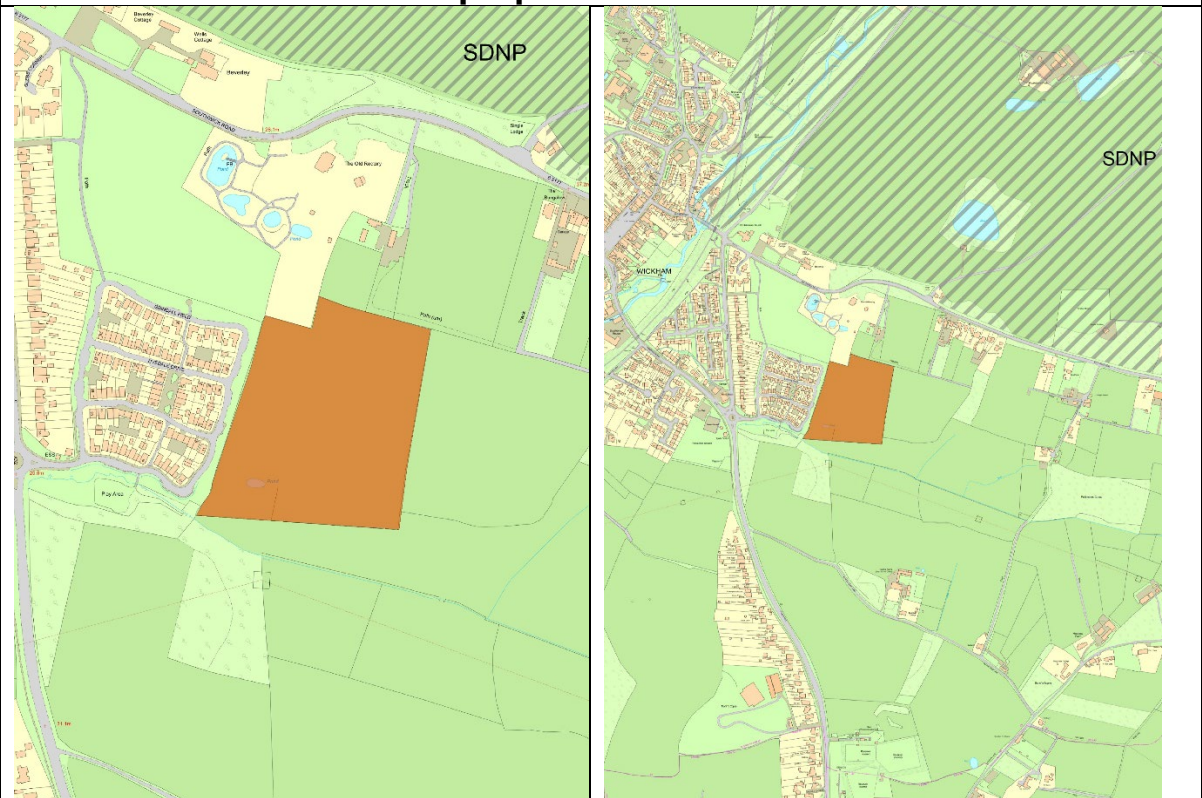
WK5 proposed modification



WK6 reg 19 (page 465 in the Local Plan)



WK6 proposed modification



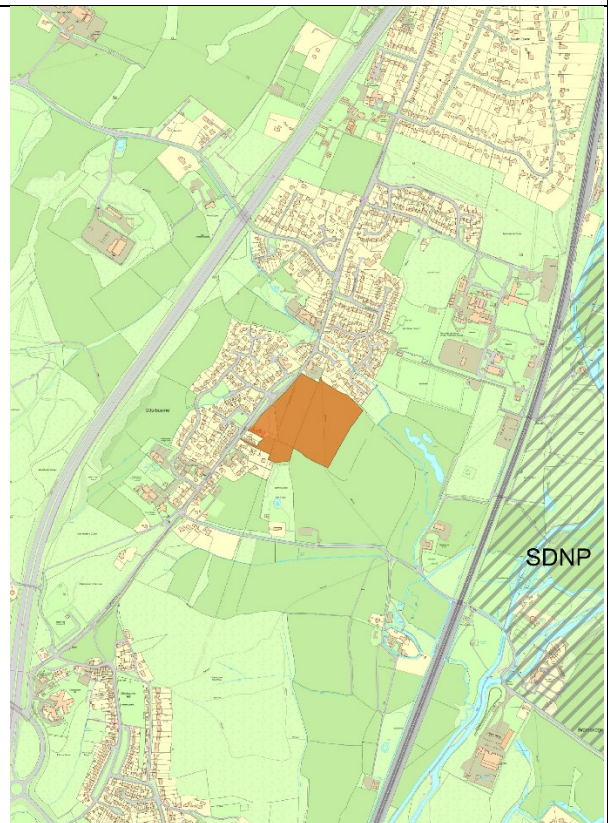
OTTERBOURNE

OT01 Reg 19 (page 479 in the Local Plan)



OT01 proposed modification

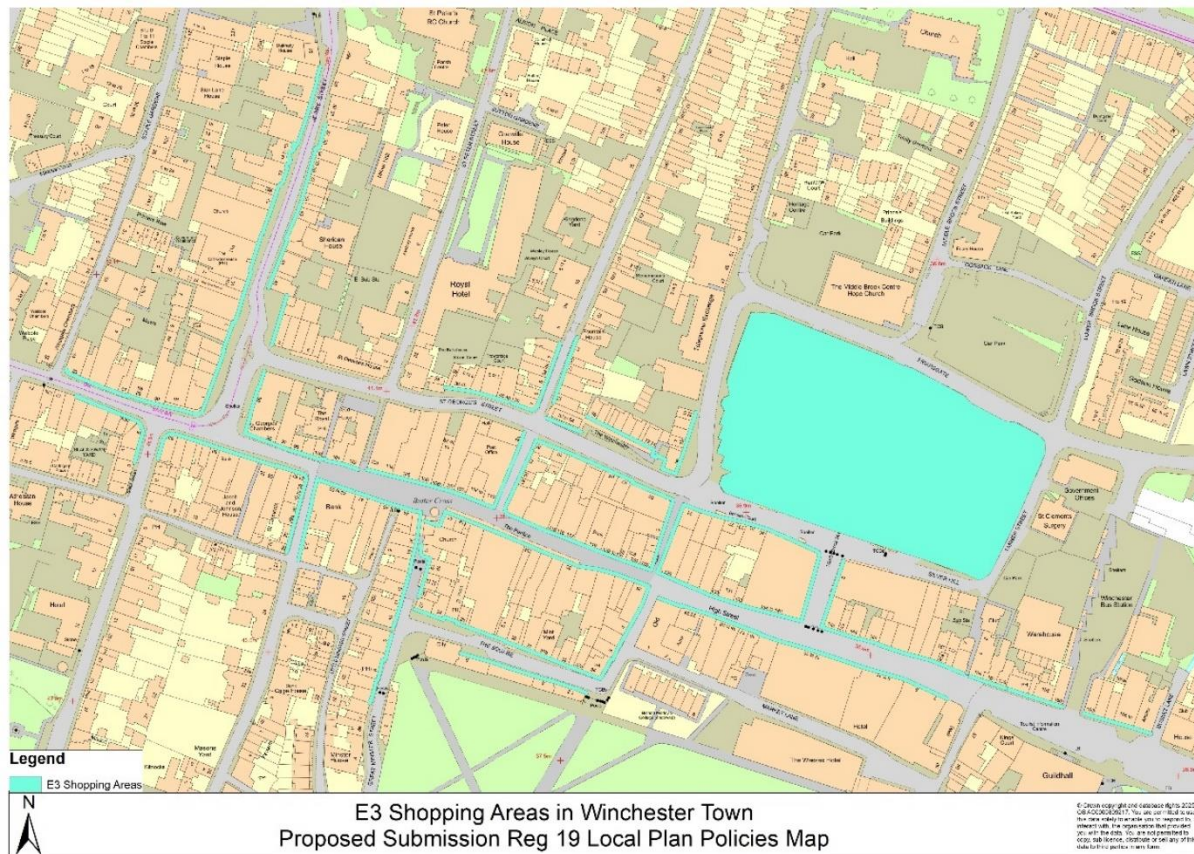
No change
SDNP boundary not visible at this scale



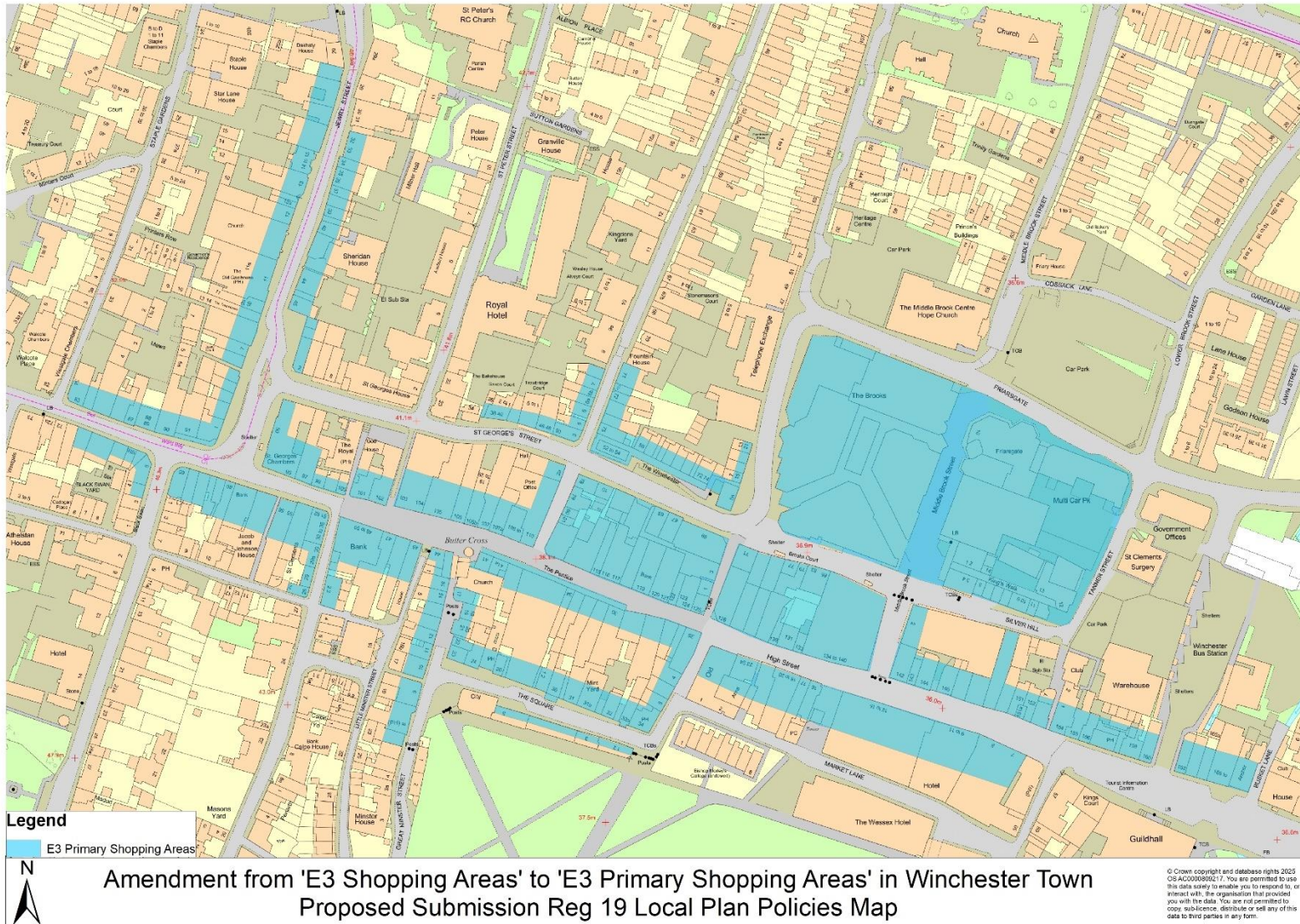
This document explain the amendments to the online and printed Local Plan Policies Map

- 1) In the schedule of proposed changes SD14b it identified PM163 – change to the 'E3 Shopping Areas' layer. This proposed modification only affects Winchester Town. The change needs to be made to the online and printed Local Plan Policies Map. All other E3 Shopping Areas will remain the same.
- 2) Change to legend of the policies map: '~~E3 Shopping Areas~~' changed to '**E3 Primary Shopping Areas**'

Currently on the online Policies Map ([Local Plan Policies Map](#)) and on the printed Local Plan Policies Map for Winchester Town it currently shows this:



Amendment to Policies Map -Showing E3 Primary Shopping Areas



Additional proposed modification

PM166 – this additional proposed modifications is to the legend on the online and printed Local Plan Policies Map to change as follows: ~~Town Centre (E3), Local Centre (E3), and District Centre (E3).~~ to combine them into one layer labelled as: **'E3 Town/District/Local Centre'**

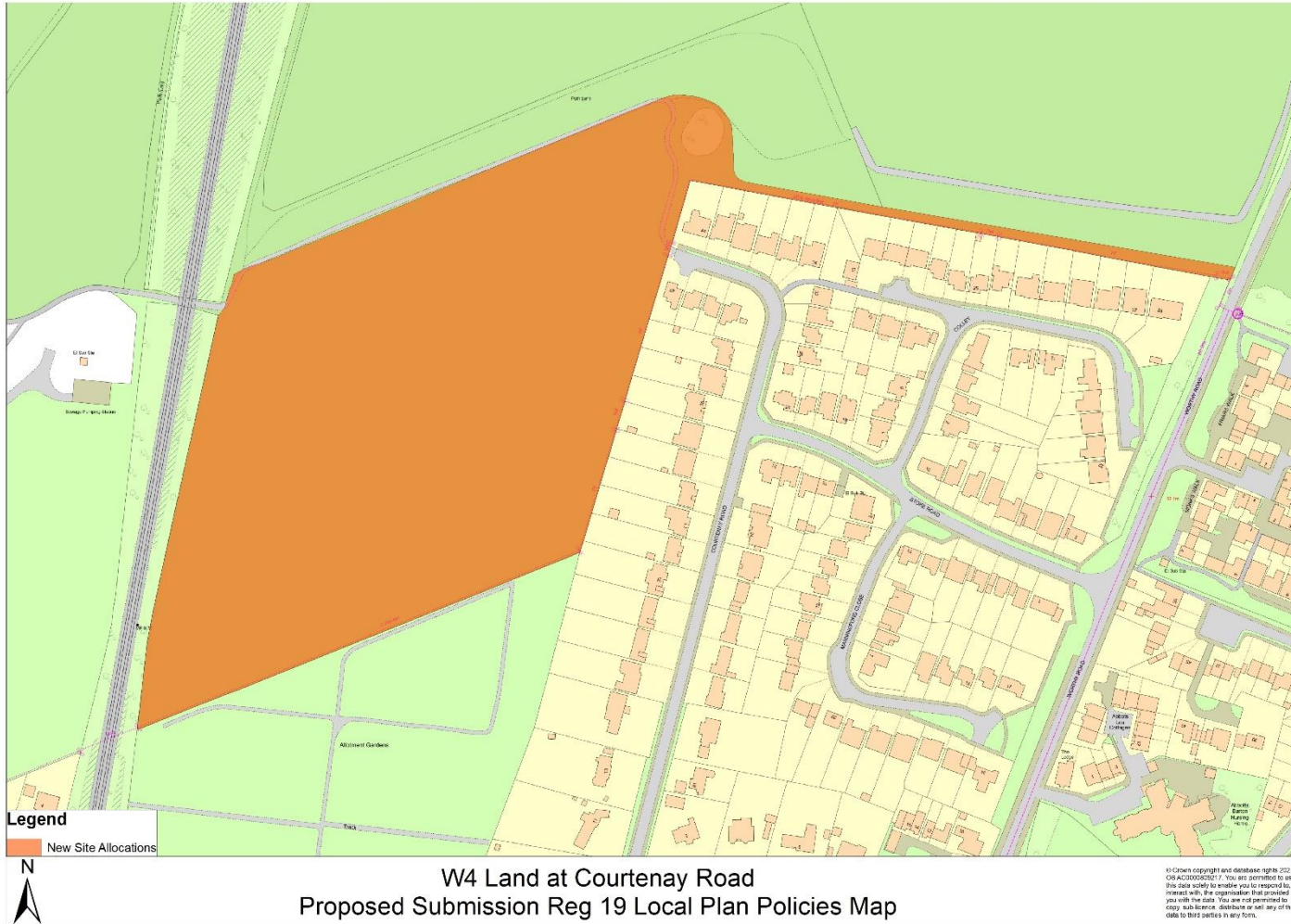
There is no change to the layers themselves, the change is only to the colour of the layer and the title on the legend on the policies map.

Additional proposed modification

PM167 – proposed modification to the site boundary of site allocation W4 Land at Courtenay Road, Winchester.

- 1) The proposed modification amends the site boundary on the online and printed version of the policies map
- 2) The proposed modification amends the site boundary in the Proposed Submission Local Plan Reg 19 page number 327 inset maps

The policies map currently shows:



PM167 - Amendment to site boundary W4 Land at Courtenay Road with the removal of the footpath and also the belt of trees/hedgerow. This is approximately 8m from the edge of the footpath and the allocated site.



Amendment to W4 Land at Courtenay Road
Proposed Submission Reg 19 Local Plan Policies Map

© Crown copyright and database rights 2005
OS AC0000000217. You are permitted to use
this data solely to enable you to respond to,
or interact with, the organisation that provided
you with the data. You are not permitted to
copy, re-use, distribute or sell any of this
data to third parties in any form.