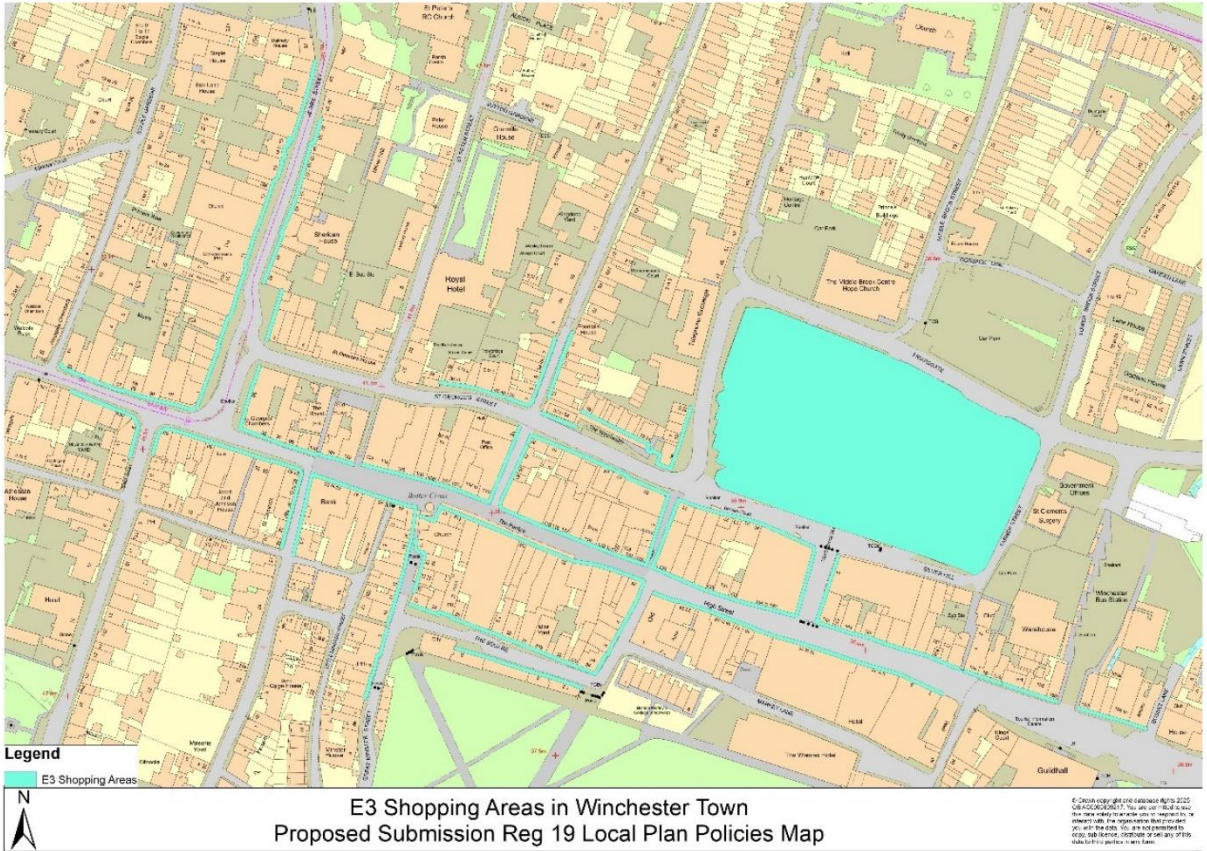


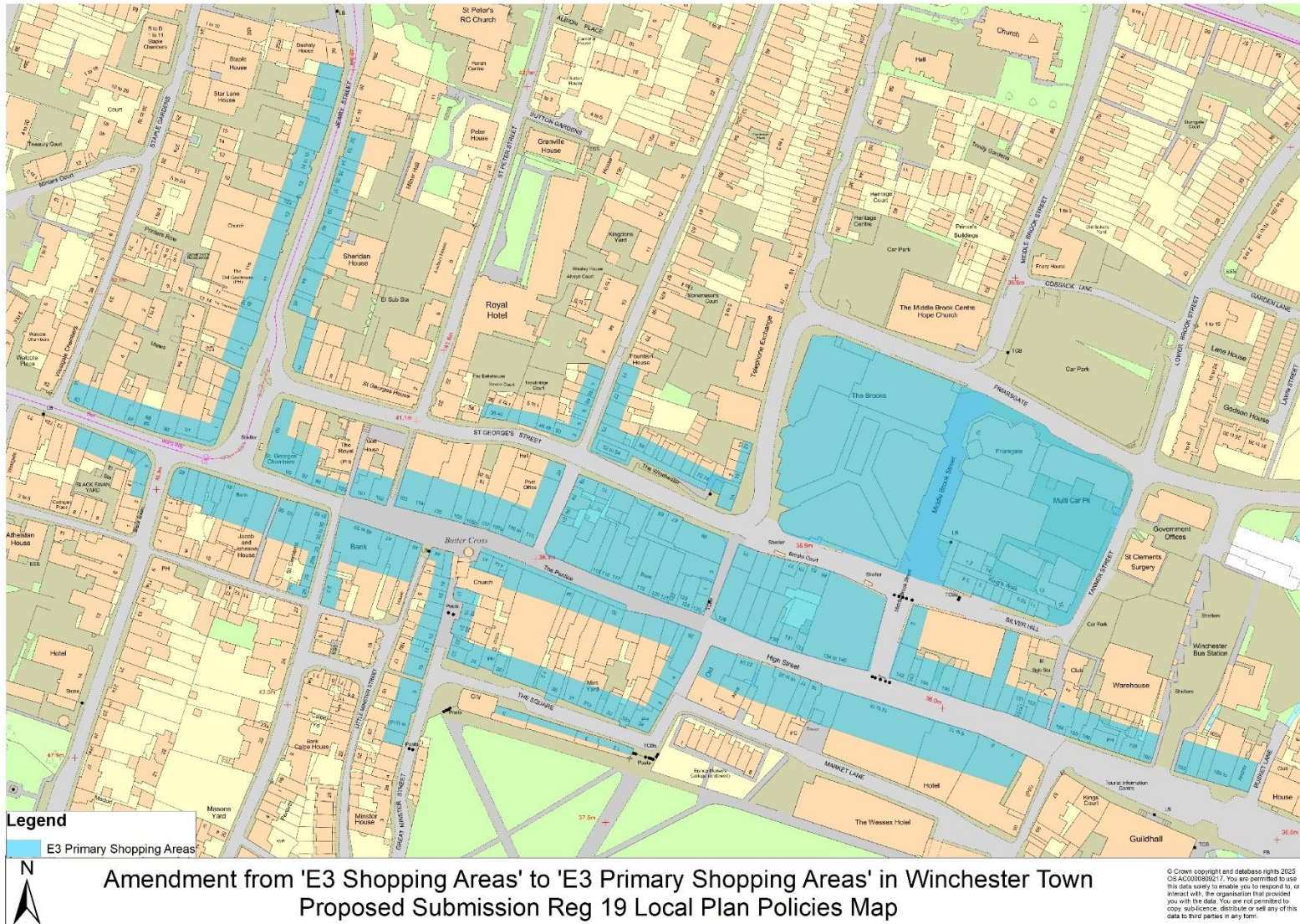
This document explain the amendments to the online and printed Local Plan Policies Map

- 1) In the schedule of proposed changes SD14a it identified PM163 – change to the ‘E3 Shopping Areas’ layer. This proposed modification only affects Winchester Town. The change needs to be made to the online and printed Local Plan Policies Map. All other E3 Shopping Areas will remain the same.
- 2) Change to legend of the policies map: ‘E3 Shopping Areas’ changed to ‘E3 Primary Shopping Areas’

Currently on the online Policies Map ([Local Plan Policies Map](#)) and on the printed Local Plan Policies Map for Winchester Town it currently shows this:



Amendment to Policies Map -Showing E3 Primary Shopping Areas



Additional proposed modification

PM166 – this additional proposed modifications is to the legend on the online and printed Local Plan Policies Map to change as follows: ~~Town Centre (E3), Local Centre (E3), and District Centre (E3).~~ to combine them into one layer labelled as: **'E3 Town/District/Local Centre'**

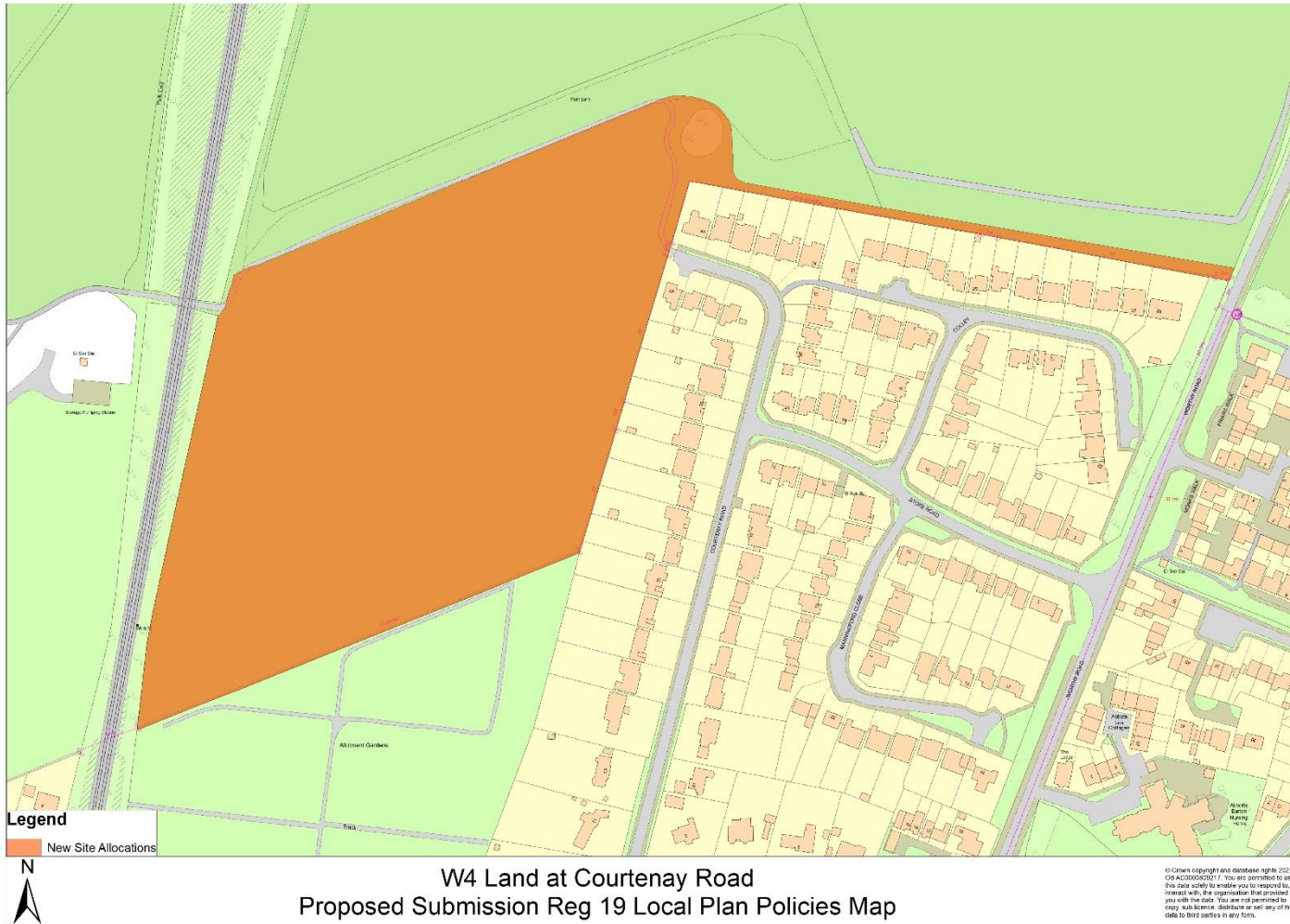
There is no change to the layers themselves, the change is only to the colour of the layer and the title on the legend on the policies map.

Additional proposed modification

PM167 – proposed modification to the site boundary of site allocation W4 Land at Courtenay Road, Winchester.

- 1) The proposed modification amends the site boundary on the online and printed version of the policies map
- 2) The proposed modification amends the site boundary in the Proposed Submission Local Plan Reg 19 page number 327 inset maps

The policies map currently shows:



PM167 - Amendment to site boundary W4 Land at Courtenay Road with the removal of the footpath and also the belt of trees/hedgerow. This is approximately 8m from the edge of the footpath and the allocated site.



Amendment to W4 Land at Courtenay Road
Proposed Submission Reg 19 Local Plan Policies Map

© Crown copyright and database rights 2005
OS AC0000000217. You are permitted to use
this data solely to enable you to respond to,
or interact with, the organisation that provided
you with the data. You are not permitted to
copy, re-use, distribute or sell any of this
data to third parties in any form.