

ED19

Statement of Common Ground
Between
Winchester City Council and Natural England

March 2025



Winchester
City Council

CONTENTS

1. Introduction
2. Legislation
3. Statement of Common Ground

Appendix 1 – Letter from Natural England on the 22nd November 2024 outlining the Compensatory measures on the River Test and River Meon arising from the Lower Itchen Drought Order and Candover Augmentation Scheme Drought Order

1. Introduction

A Statement of Common Ground (to be referred to throughout as SoCG), of which concerns strategic cross-boundary matters, is a written record of the progress made by strategic plan-making authorities (and other prescribed bodies¹) during the process of (non-exhaustive) producing or reviewing a local plan. It documents the effective co-operation between the parties and outlines matters that are common ground (agreed) and areas of disagreement. Introduced by the 2018 National Planning Policy Framework, strategic policy making authorities are required to produce, maintain, and keep up to date a SoCG to highlight the agreements on cross-boundary strategic issues.

The SoCG (and associated Duty to Cooperate Statement of Compliance - to be published to support the Winchester City Council Regulation 22 Local Plan) is used to demonstrate at examination that respective authorities (and relevant bodies) have cooperated on cross-boundary matters; and that the plan has been prepared in a positive and effective manner, therefore meeting the soundness test². The document assists in presenting evidence that plans are deliverable over the plan period and based on effective joint working across local authority boundaries. Furthermore, it is also part of the evidence required for local planning authorities to demonstrate that they have complied with the legal compliance of the Duty to Cooperate.

This SoCG documents the outcomes of co-operation to date in preparing the local plan in order to inform and shape a positively prepared and justified strategy. In doing so it addresses, has been produced in accordance with, and takes account of the requirements set out in the National Planning Policy Framework³ (NPPF), Planning Practice Guidance⁴ (PPG), relevant planning acts, and any other applicable information.

The document sets out the following:

- Outlines the strategic geography of the district including a brief description of the area with regards to biodiversity and the natural environment;
- Sets out the Regulation 18 representations received from Natural England which forms the background to the SoCG; and
- Sets out the Regulation 19 representations received from Natural England which forms an update on the strategic matters in the SoCG. The cross-boundary matters which need to be considered by this SoCG and where agreements have been reached on issues.

¹ [The Town and Country Planning \(Local Planning\) \(England\) Regulations 2012 \(legislation.gov.uk\)](https://www.legislation.gov.uk)

² [National Planning Policy Framework \(publishing.service.gov.uk\)](https://www.publishing.service.gov.uk) para 35

³ [National Planning Policy Framework \(publishing.service.gov.uk\)](https://www.publishing.service.gov.uk)

⁴ [Plan-making - GOV.UK \(www.gov.uk\)](https://www.gov.uk) Maintaining Effective Cooperation

2. Legislation

The “Duty to Cooperate” was introduced by Section 33A of the Planning and Compulsory Purchase Act (2004)⁵ from Section 110 of the Localism Act (2011)⁶ as a strategic planning mechanism to replace regional spatial strategies. It places a legal duty on Local Planning Authorities, County Councils and prescribed public bodies to engage constructively, actively, and on an ongoing basis to maximise the effectiveness of local plan and marine plan preparation in the context of strategic cross boundary matters.

Strategic matters regarding plan-making refers to: *“sustainable development or use of land that has or would have a significant impact on at least two planning areas, including (in particular) sustainable development or use of land for or in connection with infrastructure that is strategic and has or would have a significant impact on at least two planning areas.”* (Section 33A, (4)(a))

Additionally, paragraph 20 of the NPPF outlines the strategic policies that a local plan should address, resolve, and where necessary, make provision for, these being:

- a) *“Housing (including affordable housing), employment, retail, leisure and other commercial development;*
- b) *The provision of infrastructure for transport, telecommunications, security, waste management, water supply, wastewater, flood risk and coastal change management, and the provision of minerals and energy (including heat);*
- c) *Community facilities (such as health, education and cultural infrastructure); and*
- d) *Conservation and enhancement of the natural, built and historic environment, including landscapes and green infrastructure, and planning measures to address climate change mitigation and adaptation.”*

Paragraphs 24 – 28 of the National Planning Policy Framework (NPPF) recognises this duty and considers effective, joint working between relevant bodies as integral to a positive and well-prepared strategy. Paragraph 26 also identifies joint working as helping to determine additional infrastructure, and whether development needs that cannot be wholly met within a particular plan area could be met elsewhere. PPG paragraphs 029 – 033, and 075 provide further information on meeting the Duty to Cooperate, explains the differences between the Duty to Cooperate and a SoCG, illustrates how the Duty to Cooperate is considered during examination, and how the Duty to Cooperate should be addressed during plan review.

Further to this, two of the four “tests of soundness” of Local Plans (NPPF Paragraph 36) directly relate to the Duty to Cooperate, specifically:

- a) *“Positively prepared – providing a strategy which, as a minimum, seeks to meet the area’s objectively assessed needs; and is informed by agreements with other authorities, so that unmet need from neighbouring*

⁵ [Planning and Compulsory Purchase Act 2004 \(legislation.gov.uk\)](https://www.legislation.gov.uk/ukpga/2004/20/section/33A)

⁶ [Localism Act 2011 \(legislation.gov.uk\)](https://www.legislation.gov.uk/ukpga/2011/22/section/110)

areas is accommodated where it is practical to do so and is consistent with achieving sustainable development;

- c) *Effective – deliverable over the plan period, and based on effective joint working on cross-boundary strategic matters that have been dealt with rather than deferred, as evidenced by the statement of common ground”*

In regard to the production of a SoCG, paragraph 28 of the NPPF specifically states:

“In order to demonstrate effective and on-going joint working, strategic policy making authorities should prepare and maintain one or more statements of common ground, documenting the cross-boundary matters being addressed and progress in cooperating to address these. These should be produced using the approach set out in national planning guidance and be made publicly available throughout the plan-making process to provide transparency.”

The Plan Making chapter of the PPG and in particular the *Maintaining Effective Cooperation* section (paragraphs 009 – 028) provides additional information and guidance on how authorities should (non-exhaustive): produce a SoCG, what cross-boundary matters should be included, carrying out effective cooperation, activities documented, functional geographical area, and preparation and publication.

The Government consulted upon reforms to national planning policy during December 2022 as part of the Levelling Up and Regeneration Bill (LURB), stating that the Levelling Up and Regeneration Act (LURA) will remove the Duty to Co-operate, but that the duty will remain in place until those provisions come into effect. To secure appropriate engagement between authorities where strategic planning considerations concern cross-boundary matters, the Government intends to introduce an alignment policy as part of a future revised Framework. Further consultation on what should constitute the alignment policy is anticipated to be undertaken.

The LURA was enacted during November 2023, and now includes provisions to remove the legislative that imposes the Duty to Co-operate. However, these provisions have not yet been enacted and will ‘come into force on such day as the Secretary of State may by regulations appoint’. Transitional arrangements mean that the Duty to Cooperate will remain for plans submitted for examination before June 2025 and adopted by December 2026.

3. Statements of Common Ground

This section comprises the Statement of Common Ground that Winchester City Council and Natural England have entered into in support of the authorities' respective Local Plan. This statement demonstrates the current understanding of points of common ground in addition to outstanding matters, for relevant strategic cross-boundary matters.

1. List of Parties involved:
Winchester City Council and Natural England
2. Strategic Geography & Background
<p>This Statement of Common Ground focuses on the Winchester Plan Area, which covers parts of the Winchester District outside of the South Downs National Park.</p> <p>The district has many areas which are highly important for biodiversity and nature conservations. At an international level, the District is adjacent to or within some parts of designated Special Areas of Conservation (SAC).</p> <p>Paragraph 192 of the NPPF states to protect and enhance biodiversity and geodiversity, plans should:</p> <ul style="list-style-type: none">a) <i>Identify, map and safeguard components of local wildlife-rich habitats and wider ecological networks, including the hierarchy of international, national and locally designated sites of importance for biodiversity; wildlife corridors and stepping stones that connect them; and areas identified by national and local partnerships for habitat management, enhancement, restoration or creation; and</i>b) <i>promote the conservation, restoration and enhancement of priority habitats, ecological networks and the protection and recovery of priority species; and identify and pursue opportunities for securing measurable net gains for biodiversity.</i> <p>A key objective of the Winchester Local Plan has been to ensure that important habitat sites across the District are protected and enhanced whilst directing development to appropriate and less sensitive areas.</p> <p>Paragraph 193 a) of the NPPF states that:</p> <p><i>If significant harm to biodiversity resulting from a development cannot be avoided (through locating on an alternative site with less harmful impacts), adequately mitigated, or, as a last resort, compensated for, then planning permission should be refused.</i></p> <p>Paragraph 187 of the NPPF states that 'Planning Policies and decisions should contribute to and enhance the natural and local environment by:</p>

c) *Preventing new and existing development from contributing to, being put at unacceptable risk from, or being adversely affected by, unacceptable levels of...water pollution. Development should, wherever possible, help to improve local environmental conditions such as...water quality, taking into account relevant information such as river basin management plans’.*

The Local Plan is supported by a Habitats Regulations Assessment (HRA) which proposes a variety of policies and mitigation measures which avoids and mitigates any identified likely significant effects.

3. Regulation 18 Representations

Natural England responded to the Regulation 18 consultation conducted in November - December 2022. Natural England’s response included recommendations and comments, including support for a number of policies, on the environmental issues that will need to be considered for the development of the Winchester Local Plan.

4. Regulation 19 Representations

Natural England responded to the Regulation 19 consultation on the Local Plan conducted in August – October 2024. Natural England’s representations included a holding objection relating to the air quality assessment of the Local Plan. The holding objection requested two elements to be assessed as part of the Air Quality Assessment. Firstly, that the traffic impacts associated with new development particularly where there are impacts on Habitats sites and SSSI’s are assessed, Secondly, that the Habitats Regulation Assessment (HRA) should consider any detrimental impacts on the natural environment alone or in combination and suggest appropriate avoidance or mitigation measures where possible.

Natural England’s response also included a number of matters that were advisory and recommended that changes are made to the Plan and the HRA for clarity, completeness and inclusivity.

The Council provided an addendum to the HRA (SD04a) in order to address both the findings of the Air Quality Assessment and the advisory matters set out in Natural England’s Response.

An update to the previous Statement of Common Ground was therefore required to ensure Natural England’s comments on strategic matters are addressed.

5. Post Submission Actions

A meeting was arranged with Natural England to discuss the findings of the Air Quality Assessment and as a result an updated Air Quality Assessment ([ED05](#)) was provided and submitted to the Inspector along with a letter from Natural England ([ED04](#)). The letter from Natural England confirmed that the Council has addressed their previous concerns and formally withdrew their objection to the Plan for reasons of soundness.

At the time of publishing the HRA addendum, work had not been completed on the impact of air pollution on compensatory habitats identified by Natural England in their letter to the Council on the 22nd November (Appendix 1).

A further Air Quality Assessment and Supplementary HRA was produced by the Council to assess the impacts of air pollution on the compensatory habitats.

6. Strategic Matters

This section sets out where agreement has been reached on cross-border strategic matters, or where further work to reach common ground is required. Duty to Cooperate meetings have taken place over the course of the Local Plan to discuss and resolve matters presented as part of the plan preparation, details of which and minutes documenting the outcome of the meeting(s) will be included in the Duty to Cooperate Statement of Compliance that will assist the Regulation 19 consultation.

The housing need for the Winchester Local Plan area, based on the standard methodology, is 676 dwellings per annum. This equates to a total of 13,565 dwellings over the plan period 2020 – 2040.

Following Duty to Cooperate meetings with Natural England over the course of the plan preparation it was agreed between parties that the following strategic matters should be the focus of this Statement of Common Ground:

- Nutrient Neutrality
- Air Quality
- Compensatory Habitats

Nutrient Neutrality

New 'overnight' accommodation necessitates the provision of connections to the foul water drainage network and can increase surface water run-off. This can increase the amount of nutrients entering designated Habitat Sites (Special Protection Areas and Special Areas of Conservation).

Natural England advised that there is a significant effect on Habitat sites from overnight accommodation and that nutrient neutrality should be demonstrated to avoid detrimental impacts on the protected sites.

Winchester City Council have prepared an updated Nutrient Neutrality Topic Paper⁷ (November 2024) which sets out the national policy requirements and legislation, background to nutrients in Winchester, the overall nutrient demand and the nutrient mitigation supply. The district falls within three riverine catchments in relation to nutrient neutrality. This includes the East Hampshire catchment and the Test and the Itchen catchment.

⁷ See Local Plan Topic Papers Heading - [Regulation 19 Local Plan - Winchester City Council](#)

Within the Topic Paper an updated nutrient budget has been prepared that sets out extent of nutrient loading and the amount of nutrient mitigation required from any 'overnight' accommodation from either sites allocated in the plan and windfall allowance to ensure there is no likely significant effect on designated sites.

Plan Nutrient Assumptions and Demand

Winchester City Council have set out the overall nutrient budget for each relevant riverine catchment in the Nutrient Neutrality Topic Paper. The Council in consultation with Natural England have agreed the following assumptions that are contained within the Local Plan Nutrient Budget:

- 2.4 occupancy per dwelling;
- Receiving waste water environmental TN/TP limit (depending on the catchment that the site is located within) with deductible acceptable loading included. The permit limits vary by catchment and are set out in Table 1, page 11 of the Nutrient Neutrality Topic Paper; and
- Current and future land uses for each allocation and their specific nitrogen loading figures.

In relation to current land use, the Council have used available information from the Crop Map of England (CROME) 2020 and information from planning applications. The CROME data was verified and refined using Officer's knowledge of the site from recent site visits and tools such as Google maps.

In relation to future land use, the Council have used information from planning applications where relevant or any proposed master plan has been drawn up for the Council. Where no such information is available in respect of future land use the Council have assumed that 100% of the site is to be developed (urban).

Winchester City Council recognise that the information presented in relation to the nutrient budget is that of a scenario and is the best information available at the time. There may be further information in relation to the site allocation nutrient budgets that are currently in the planning application stage or with Natural England as part of their Discretionary Advice Service (DAS).

Plan Nutrient Mitigation Supply

Nutrient mitigation for sites allocated in the Plan is either onsite or offsite.

Winchester City Council have set out the strategic offsite nutrient mitigation supply available to meet the demand calculated over the plan period in the Nutrient Neutrality Topic Paper. There are third party strategic nutrient mitigation schemes available in the East Hampshire, Test and Itchen Catchment for Nitrogen and the availability of credits of each scheme is set out in section 5 of the Topic Paper.

The supply also includes detailed information on the progress of the two Council owned nutrient mitigation projects. This includes the retrofitting of Council Owned properties, and the upgrading of Council owned sewage treatment works to Package Treatment Plants (PTP's).

Policy NE16 – Nutrient Neutrality Water Quality Effects on the Special Protection Areas (SPAs), Special Areas of Conservation (SACs) and Ramsar Sites of the Solent and River Itchen

To address nutrient neutrality, the Proposed Submission Local Plan contains Policy NE16 which seeks to ensure that any 'overnight' accommodation within the plan area must demonstrate that it is nutrient neutral over the lifetime of the development. The Policy also proactively supports proposals for nutrient mitigation schemes within the plan area. The policy ensure that any overnight development allocated in the plan or that comes forward as 'windfall' must have nutrient mitigation either on or off site before they are occupied and subsequently have an impact on any designated site.

Natural England's Regulation 18 and Regulation 19 Consultation responses supports the inclusion of Policy NE16 in the Local Plan. Natural England support the approach taken by the Council in relation to nutrient neutrality as set out in the Nutrient Neutrality Topic Paper.

Habitats Regulation Assessment

An initial HRA screening report was produced in July 2020 which identified the scope of the assessment and key impact pathways for the Local Plan. The Assessment concluded that the Plan without appropriate measures and mitigation is likely to result in significant affects and should proceed to Appropriate Assessment.

An Appropriate Assessment was also carried out in October 2022 to support the Regulation 18 Local Plan and a revised version has now been published to accompany the Proposed Submission (Regulation 19) Local Plan. The Appropriate Assessment concluded in relation to nutrients that Policy NE16 is sufficient to avoid adverse effects on the integrity of the designated Habitats sites, subject to continuing engagement with Natural England in relation to strategic nutrient mitigation.

Natural England commented on the Regulation 18 HRA in respect of nutrients. The response advised that a plan level nitrogen and phosphorus budget is calculated, and a suitable nutrient mitigation strategy is devised to ensure the total housing provision over the plan period can achieve nutrient neutrality. The response also encourages the allocation of land to address the impact of nutrients on new development.

Winchester City Council have set out a plan level nutrient budget for both nitrogen and phosphorus in the HRA. The budget is split, as appropriate, by riverine catchment to demonstrate the amount of nutrient mitigation required over the plan period. The Nutrient Neutrality Topic paper also provides further detail on the plan demand and how the Council intend to address this through strategic nutrient mitigation and the Council's own nutrient mitigation projects.

Air Quality

Winchester City Council included additional criterion xv. for Policy W5 in the Regulation 19 Local Plan which states,

'Where it has been demonstrated that the proposals will have a significant adverse effect on the integrity of the River Itchen SAC it must be demonstrated, as part of the design process, that adequate measures in line with Policy NE1 and Policy D7, will be put in place to avoid or mitigate any adverse effects. Such measures must be agreed with the Council and Natural England. In order to assist the Council in Policy W5 Bushfield Camp - continued carrying out a Habitats Regulations Assessment, the developer will be required to provide evidence to inform the Appropriate Assessment. This is likely to include an air quality assessment of the effects of the development on the River Itchen SAC as a result of any increase in traffic associated with the development. The effects on local roads in the vicinity of the proposed development on nearby designated nature conservation sites, and the impacts on vulnerable sites from air quality effects on the wider road network in the area can be assessed using traffic projections and the 200m distance criterion followed by local Air Quality modelling where required'

Natural England support the additional policy criteria in Policy W5 proposed for inclusion within the Regulation 19 Local Plan.

Following Natural England's representation on the Regulation 19 Local Plan, as set out in section 4 of this statement, Winchester City Council undertook an Air Quality Assessment (SD04b). The assessment concludes that the Local Plan would decrease pollutant concentrations/deposition rates at the River Itchen SAC. Therefore, the Local Plan would not have an adverse effect on the site integrity of the River Itchen SAC. Consequently, the Council published an addendum to the Habitats Regulations Assessment (SD04a) which concludes that there will be no adverse effects on the integrity of the River Itchen SAC due to air pollution. The addendum to the HRA also recommends the removal of criterion xv. from Policy W5 (Bushfield Camp), as adverse effects have now been ruled out.

Compensatory Habitats

Natural England's Regulation 19 consultation response advised that the River Meon and River Dever are being considered as compensatory habitat for Southern Water's Drought Plan. At the point the Drought Order is enacted the River Meon will be considered as the River Itchen Compensatory habitat SAC, similarly the River Dever will become the River Test Compensatory Habitat SAC. Natural England advised that these should be taken forward for consideration in the Local Plan HRA.

Winchester City Council engaged with Natural England on the 21st October and the 29th October to understand the parts of the Plan area that were covered by the proposed Compensatory habitat in order to undertake an assessment in an addendum to the HRA (SD04a). Natural England were not able to provide a map to the Council to identify the Compensatory habitat or any buffers to clarify the areas to be covered as part of the assessment. Instead, Natural England provided a table to the Council which set out the riverine areas identified for the provision of the compensatory measures. Winchester City Council continued to assess the areas covered by the compensatory habitats using their own maps and resources available.

Winchester City Council received notification in the form of a letter from Natural England on the 22nd November 2024 in respect of compensatory measures on the River Test and River Meon arising from the Lower Itchen Drought Order and Candover Augmentation Scheme Drought Order by Southern Water after the Council had twice requested information on the areas covered by the compensatory habitats (see Appendix 1). The Council noted that the letter included maps of the compensatory habitats date February 2023 which is prior to the request from the Council to Natural England to clarify the area covered by the compensatory habitats.

Winchester City Council published an addendum to the HRA (SD04a) which assesses the potential impacts of the Local Plan on the compensatory habitats. The addendum to the HRA sets out measures to mitigate impacts to the Compensatory habitats for water quality and infrastructure and concluded that the likely significant impacts of air pollution could not be screened out.

A further Air Quality Assessment was undertaken in respect of screening out air pollution impacts on compensatory habitats for the River Itchen SAC. The AQA concluded that the Local Plan does not results in exceedances of the 1% screening threshold for NO_x or NH₃ when considered in isolation but in combination it exceeds the threshold and Appropriate Assessment is required. The Council carried out Appropriate Assessment as a result in a Supplementary HRA, which concluded that there will be no adverse effect on the integrity of the SAC compensatory habitats due to air pollution.

7. Areas of Agreement

Natural England and Winchester City Council as Local Planning Authority have reached common ground on aspects of the emerging local plan relating to biodiversity and the natural environment.

In respect of the Local Plan's effect on the deteriorating water environment on the Special Protection Areas (SPA's), Special Areas of Conservation (SAC's) and Ramsar sites of the Solent and River Itchen agreement has been reached on:

- The assumptions used in the calculation of the Local Plan nutrient budget; and
- The plan nutrient demand.
- The proposed mitigation measures set out in the Nutrient Background paper and in Policy NE16 which will ensure that development will not adversely affect the integrity of the designated Habitat sites in the Solent and River Itchen SPA/SAC's.
- The Council will continue to engage with Natural England in respect of the Plan nutrient mitigation strategic supply.
There is no threat to the ability of the River Itchen SAC to achieve its conservation status or maintain its integrity as a result of the Local Plan.

In respect of the HRA process carried out in support of the Local Plan, Natural England in their role as a statutory consultee agrees that:

- The conclusions set out in the HRA and subsequent addendums with respect to the likely significant effects and mitigation required are appropriate.
- The HRA in their view, is legally compliant having been prepared in accordance with relevant legislation.

8. Timetable for Review and ongoing cooperation

Winchester City Council will continue to work collaboratively with Natural England to address strategic matters that, in addition to the above, arise through the plan-making process or require a resolution where there is yet to be an agreed matter. This will occur on an ongoing basis.

9. Signatories

Both parties agree that this statement is an accurate representation of matters discussed and issues agreed upon, or where there are areas of disagreement, this statement documents the issue, and that both parties confirm their respective position.

It is agreed that these discussions will inform the Winchester City Council Local Plan 2020 – 2040. Both parties will continue to work collaboratively to meet the Duty to Cooperate obligations and will both continue to work proactively on the key strategic cross boundary issues identified in this document.

For Winchester City Council the Statement of Common Ground is signed by Julie Pinnock, Corporate Head of Planning and Regulatory Services.

For Natural England this Statement of Common Ground is signed by Ellen Satchwell, Sustainable Development Senior Officer.

Signed: 

Name: Julie Pinnock

Position: Corporate Head of
Planning and Regulatory Services.

Winchester City Council

Signed: 

Name: Ellen Satchwell

Position: Sustainable Development
Senior Officer

Natural England

Appendix 1 – Letter from Natural England on the 22nd November 2024 outlining the Compensatory measures on the River Test and River Meon arising from the Lower Itchen Drought Order and Candover Augmentation Scheme Drought Order

Date: 22 November 2024
Our ref: River Itchen SAC compensatory habitat



Customer Services
Hombeam House
Crewe Business Park
Electra Way
Crewe
Cheshire
CW1 8GJ

0300 060 3900

BY EMAIL ONLY

Dear Sir/Madam

Compensatory measures on the River Test and River Meon arising from the Lower Itchen Drought Order and Candover Augmentation Scheme Drought Order

Summary: Local Planning Authorities (LPAs) should familiarise themselves with the locations of compensatory habitat outside of the River Itchen Special Area of Conservation (SAC). These areas (will) perform a compensatory function for protected features of the River Itchen SAC which will suffer adverse impacts as a result of abstraction in drought situations. The National Planning Policy Framework (NPPF) sets out the requirements for areas such as this, which we recommend LPAs review promptly.

We are writing to bring to your attention that, in accordance with the Conservation of Habitats and Species Regulations 2017 (as amended), the Secretary of State for Environment, Food and Rural Affairs has secured the provision of new compensatory measures which are considered necessary to offset potential adverse effects on the integrity of the River Itchen SAC and to maintain the overall coherence of the national site network (formerly known as the Natura 2000 network). These measures are to be implemented by Southern Water.

The projects giving rise to these compensatory measures (see Annex 1) are the Drought Orders named above, which, given the absence of alternative solutions, have been authorised at the request of Southern Water on the grounds of imperative reasons of overriding public interest in accordance with regulation 64 of the Conservation of Habitats and Species Regulations 2017 (as amended) and following notification to the Secretary of State.

The areas of land providing these compensatory measures are shown in the attached maps (see Annex 2). The precise boundaries shown on the maps have been provided by Southern Water who should be contacted for further information (see below). Please note these maps will also be made available on the Impact Risk Zones (IRZ) layer on MAGIC map.

Your authority should be aware that Paragraph 187c of Chapter 15 of the current NPPF states that sites such as these which have been identified or are required as compensatory measures for adverse effects on designated Special Areas of Conservation and Special

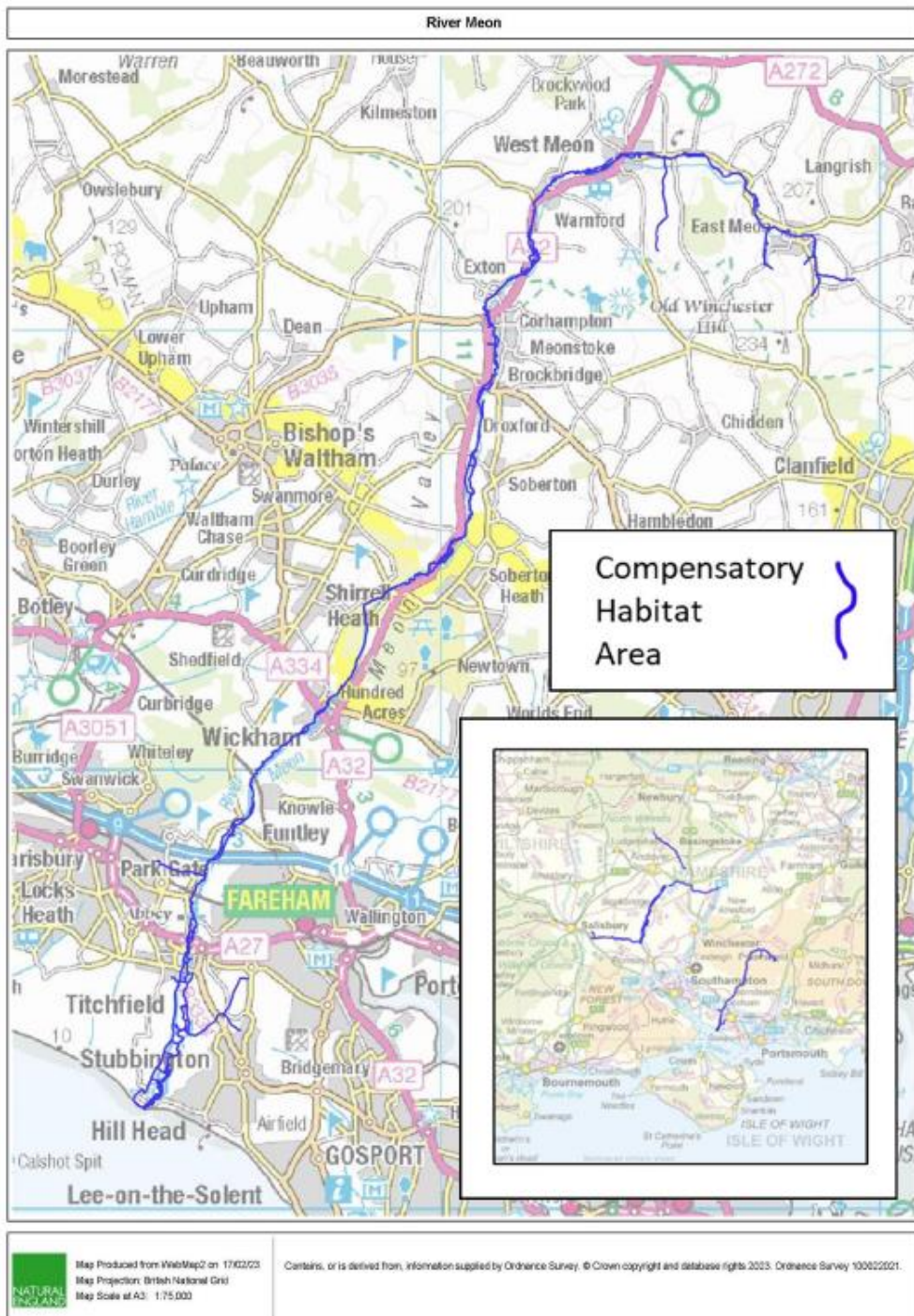
Annex 1 – Compensatory habitat features and location

Project	Designated feature of the River Itchen SAC that would be adversely affected by the Project	Area identified for the provision of compensatory measures to maintain site network coherence
Candover drought order	H3260 Water Courses of plain to montane levels with <i>R. fluitantis</i> (Chalk stream habitat) - headwaters	River Dever (River Test catchment)
Candover drought order	H3260 Water Courses of plain to montane levels with <i>R. fluitantis</i> (Chalk stream habitat) - headwaters	Bourne Rivulet (River Test catchment)
Candover drought order	H3260 Water Courses of plain to montane levels with <i>R. fluitantis</i> (Chalk stream habitat) - headwaters	River Dun (River Test catchment)
Lower Itchen drought order	H3260 Water Courses of plain to montane levels with <i>R. fluitantis</i> (Chalk stream habitat) – river habitat *S1044 Southern damselfly, <i>Coenagrion mercurial</i>	Middle River Test between Wherwell and Kimbridge/Mottisfont
Lower Itchen drought order	S1106 Atlantic salmon, <i>Salmo salar</i> H3260 Water courses of plain to montane levels with <i>R. fluitantis</i> (Chalk stream habitat) – River habitat	River Meon
Candover drought order	**S1092 Freshwater crayfish (White Clawed crayfish), <i>Austropotamobius pallipes</i> Supporting habitat chalk stream	Cheriton Stream (area already part of Itchen SAC)

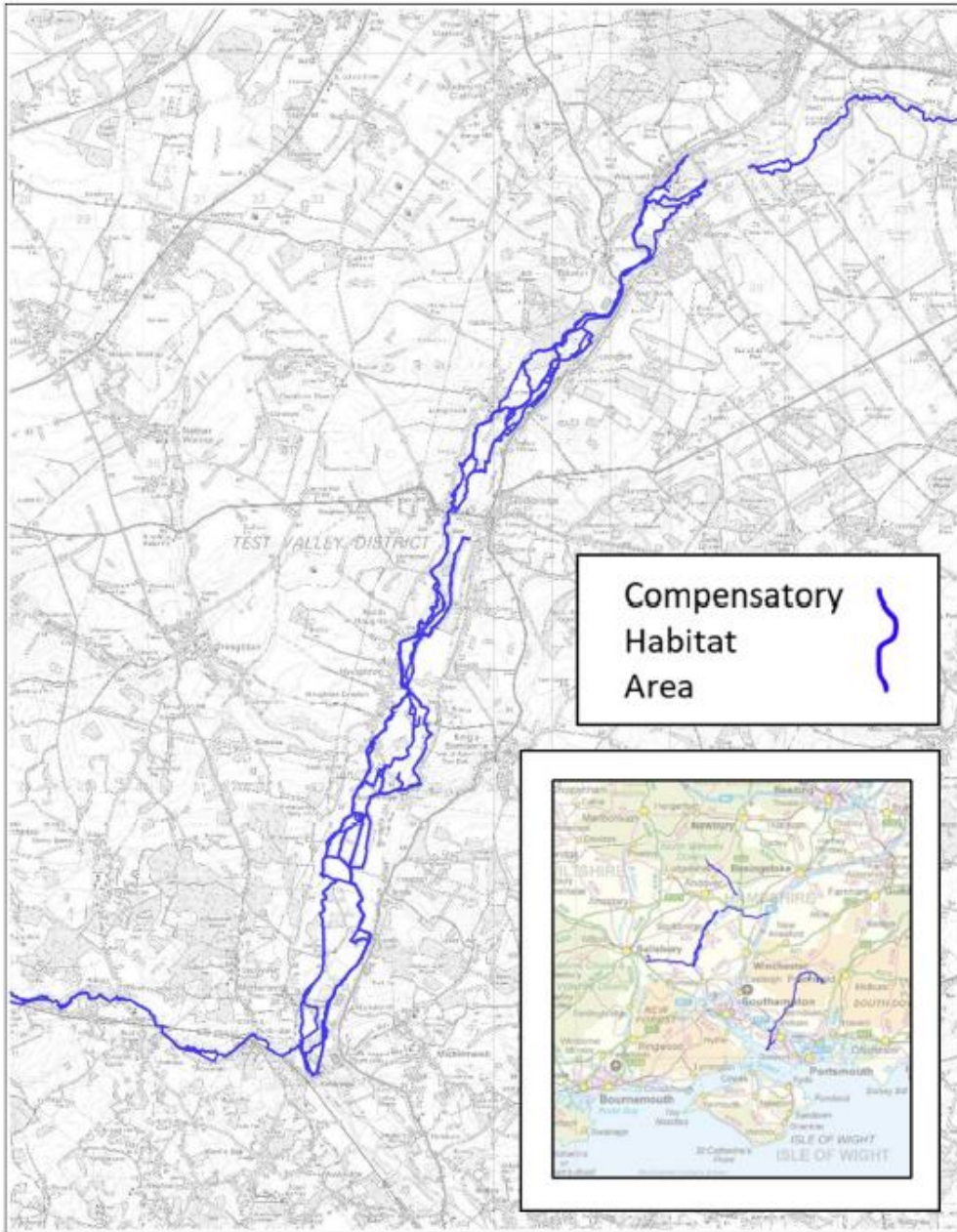
*Maps will be provided for this option at a later date sites being finalised

**Maps not provided for this option as compensation within the existing boundary of the River Itchen SAC

Annex 2 – Compensatory habitat location maps



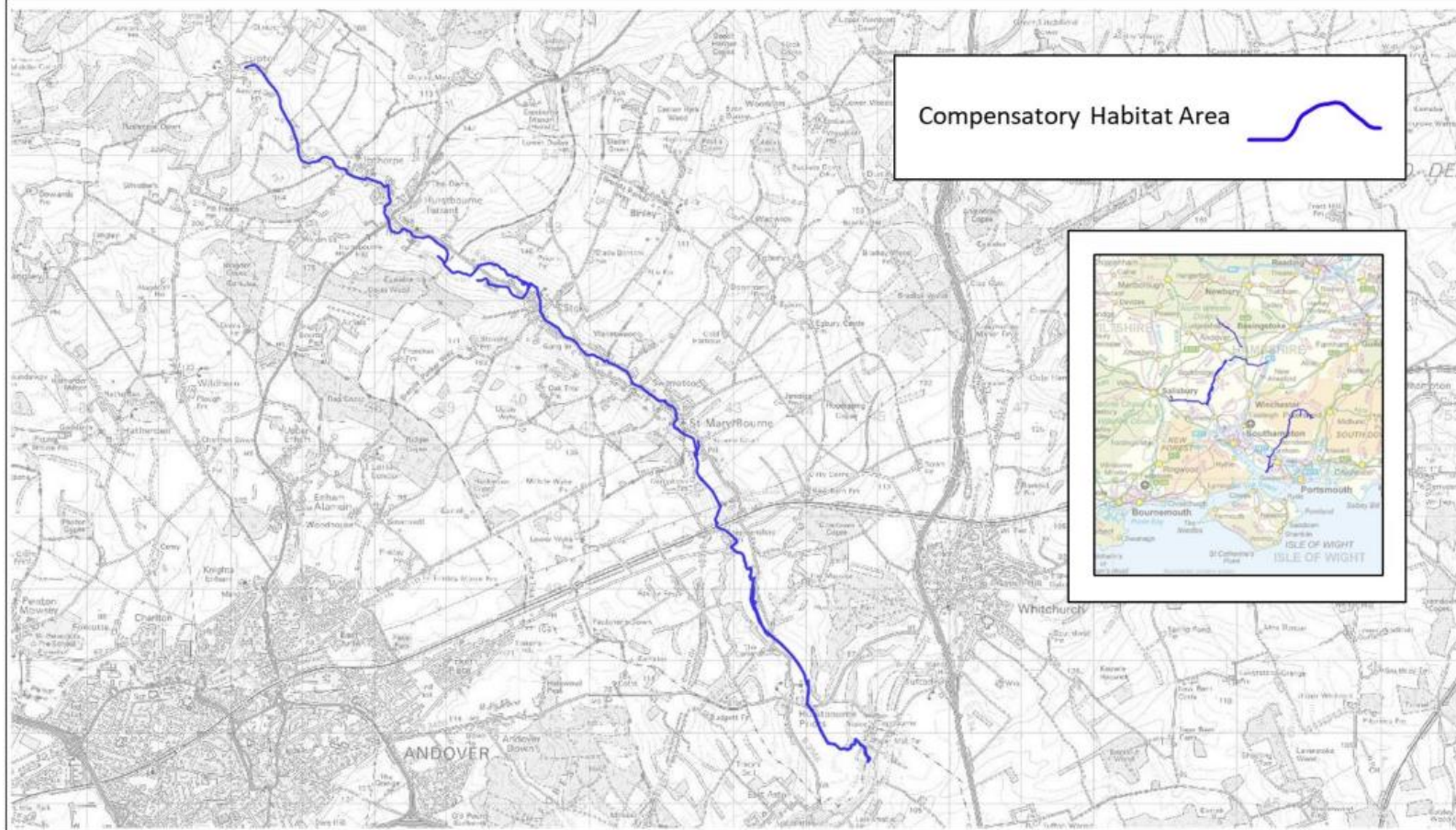
Middle River Test between Wherwell and Kimbridge/Mottisfont



 Map Produced from WebMap2 on 17/06/23
Map Projection: British National Grid
Map Scale at A3: 1:59,000

Contains, or is derived from, information supplied by Ordnance Survey. © Crown copyright and database rights 2023. Ordnance Survey 100022021.

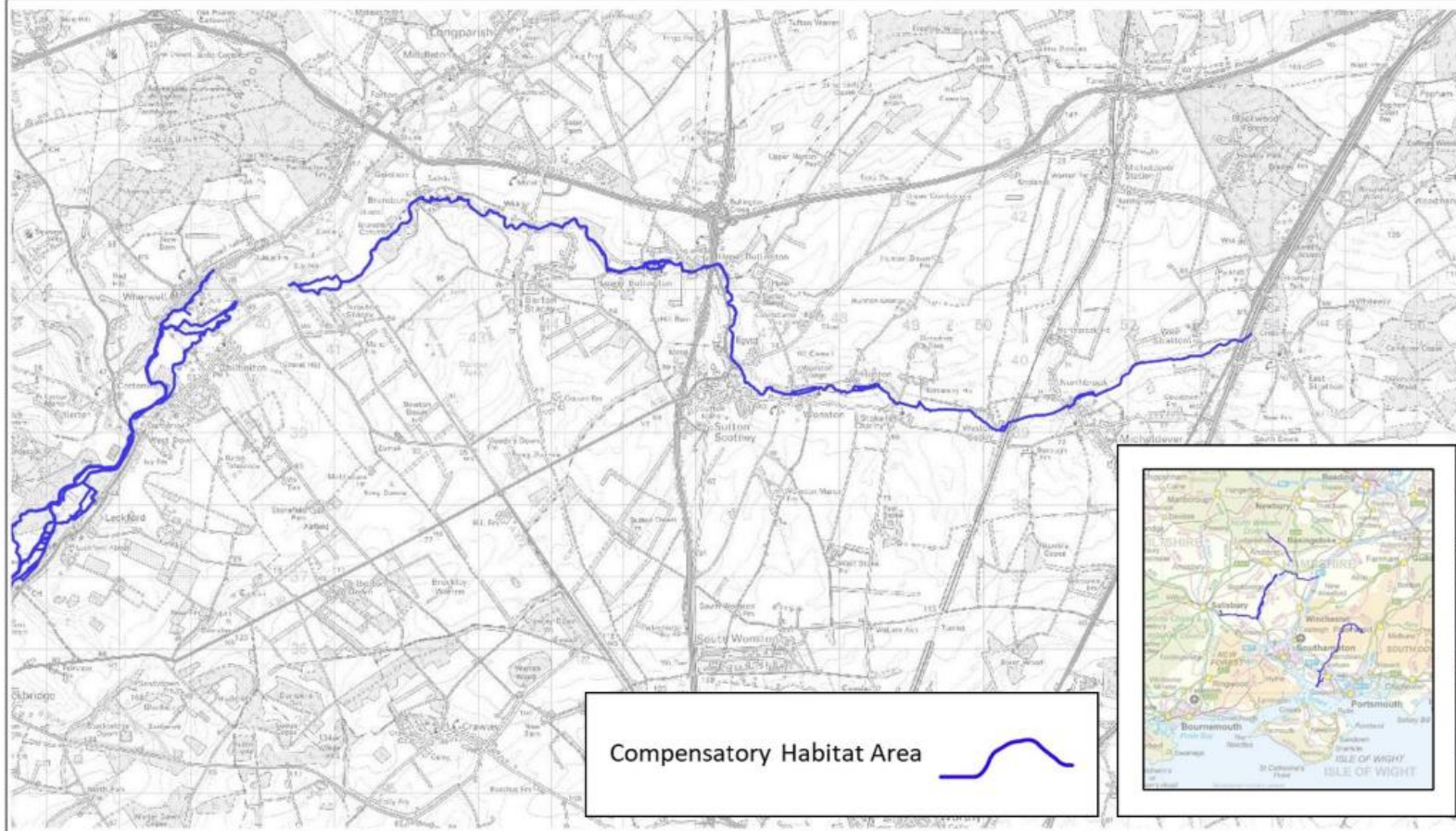
Bourne Rivulet (River Test catchment)



Map Produced from WebMap2 on 17/02/23
Map Projection: British National Grid
Map Scale at A3: 1:50,000

Contains, or is derived from, information supplied by Ordnance Survey. © Crown copyright and database rights 2023. Ordnance Survey 100022021.

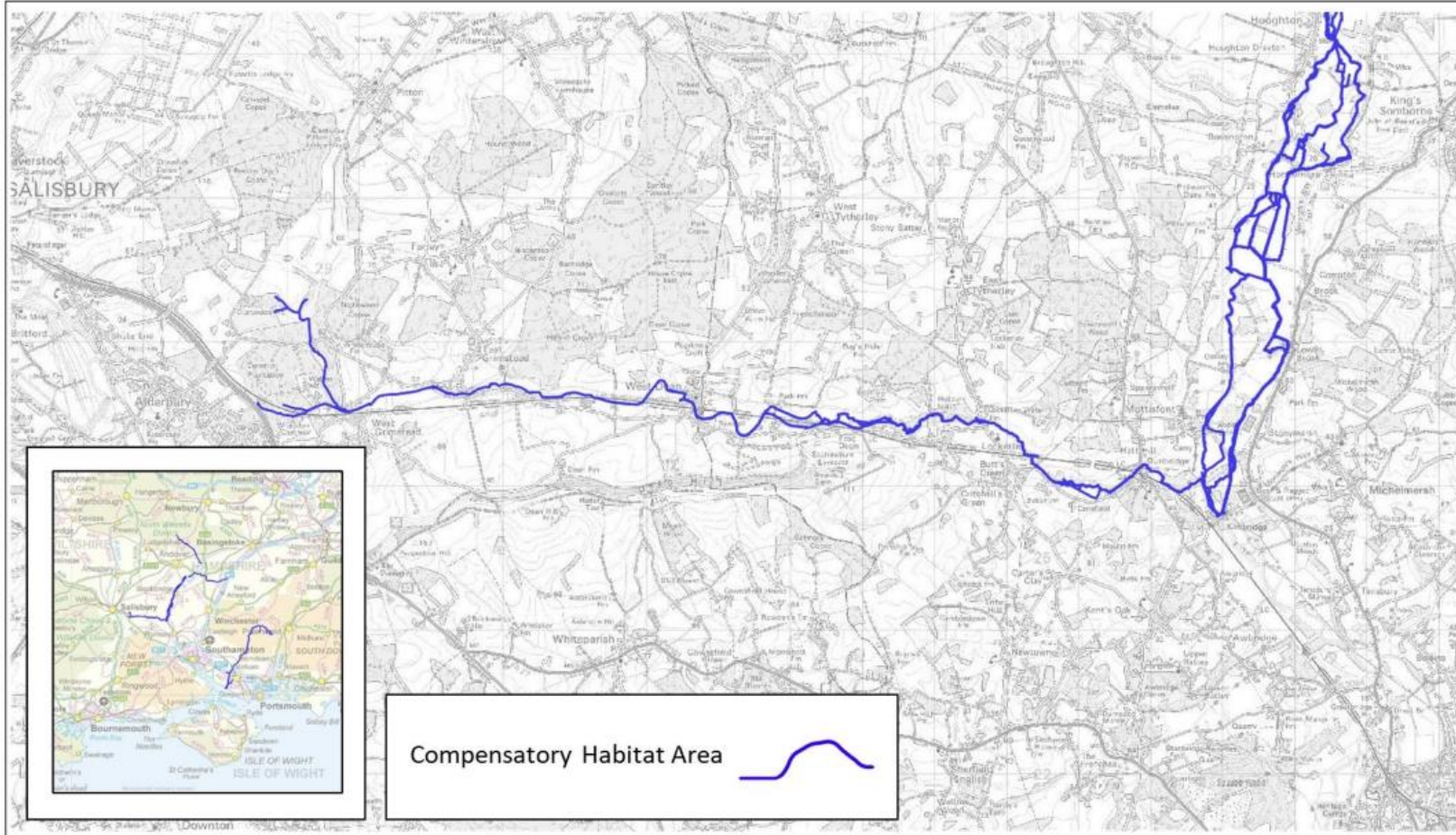
River Dever (River Test catchment)



Map Produced from WebMap2 on 17/02/23
Map Projection: British National Grid
Map Scale at A3: 1:50,000

Contains, or is derived from, information supplied by Ordnance Survey. © Crown copyright and database rights 2023. Ordnance Survey 100022021.

River Dun (River Test catchment)



Map Produced from WebMap2 on 17/02/23
Map Projection: British National Grid
Map Scale at A3: 1:50,000

Contains, or is derived from, information supplied by Ordnance Survey. © Crown copyright and database rights 2023. Ordnance Survey 100022021.