

SD14c

# **YOUR PLACE YOUR PLAN.**

Winchester District Local Plan

Schedule of Proposed Modifications  
Appendix 2

**April 2025**

## Background

This document shows the proposed changes to the Policies Map.

Some of these were previously included in the November 2024 version of the document “Schedule of Proposed Modifications Appendix 1”.

Those proposed changes, and other changes to the Policies Map identified since November 2024, have now been set out in this separate document in response to the guidance which states that the Inspector has no powers to recommend modifications directly to the Policies Map.

The Procedure Guide for Local Plan Examinations notes<sup>1</sup> that:

- 6.6 The policies map is not defined in legislation as a development plan document. This means that the Inspector has no powers to recommend MMs directly to it. However, the role of the policies map is to illustrate geographically the application of policies in the plan. If the geographical illustration of a policy is flawed, the policy will be unsound. In such circumstances, therefore, the Inspector will ask the LPA to draw up a proposed change to what is shown on the submission policies map. To ensure fairness, any such proposed changes will need to be subject to consultation alongside the MMs. When the plan is adopted, it will be for the LPA to update the adopted policies map to include those changes.

Changes to the policies map will be consulted on alongside the main modifications to the Local Plan.

---

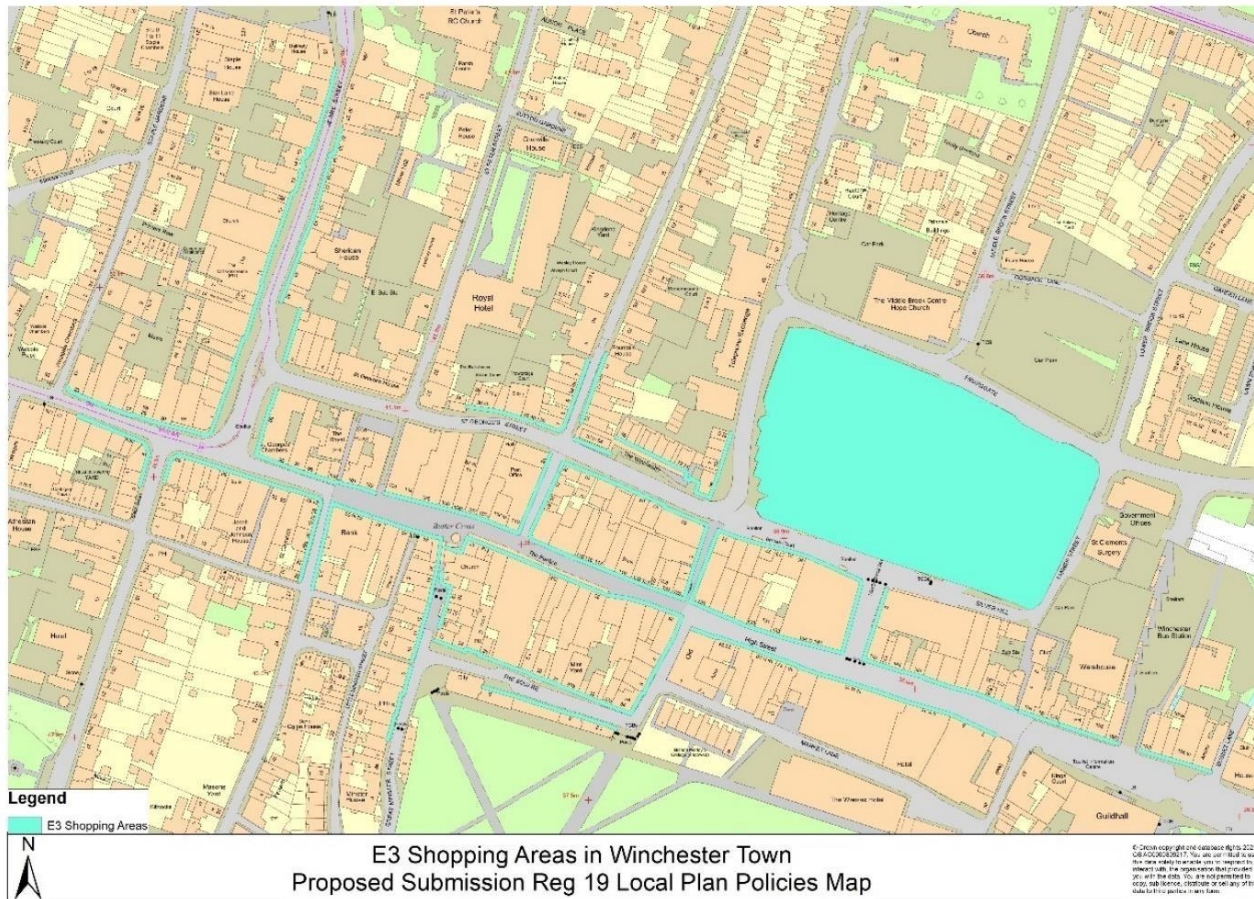
<sup>1</sup> [Procedure Guide for Local Plan Examinations - GOV.UK](#)



**PM163** - Revise policy map to remove shopping frontages and identify Primary Shopping Areas in line with Policy E3 and Policy E7

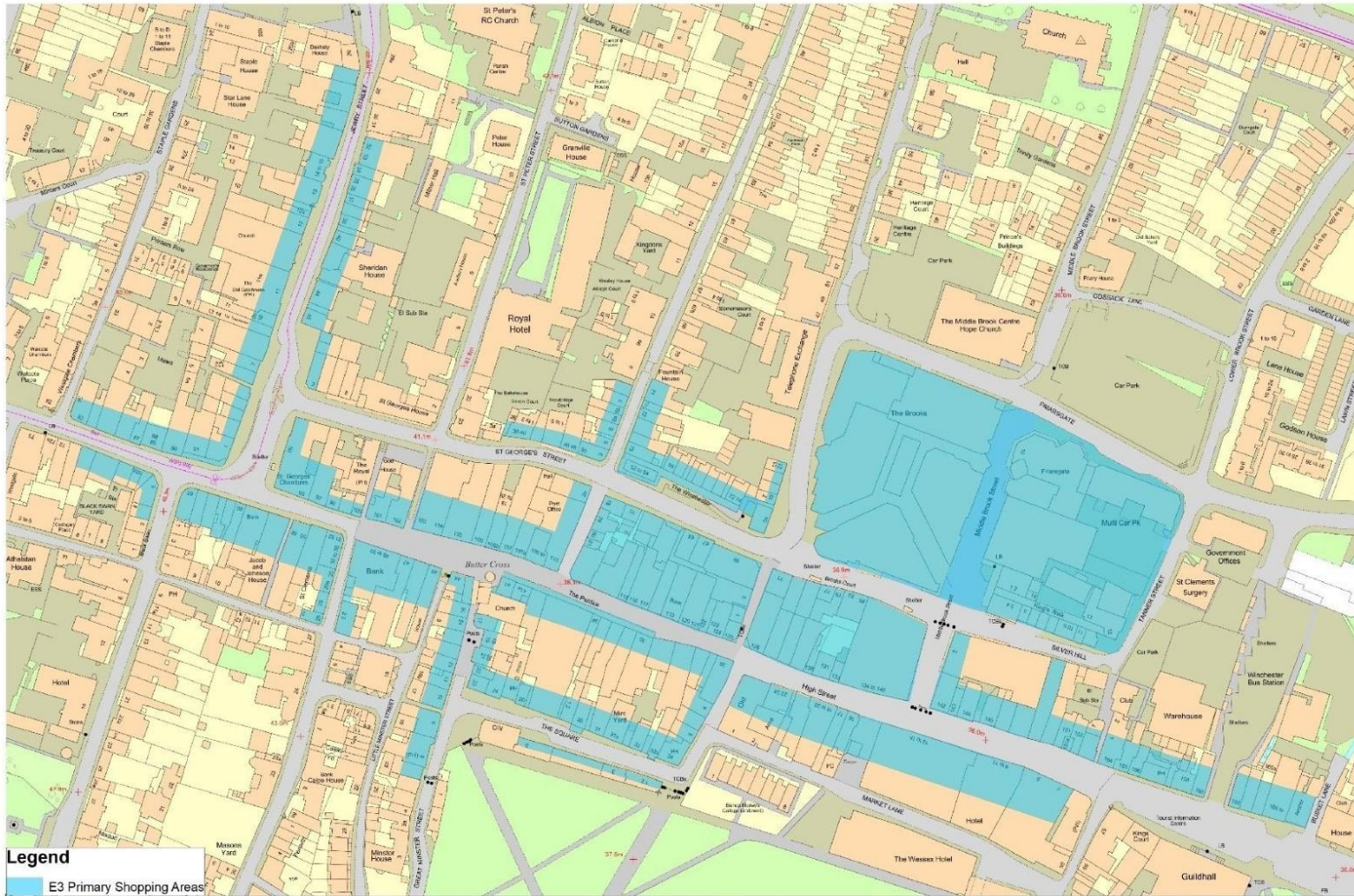
1. Change to the 'E3 Shopping Areas' layer. This proposed modification only affects Winchester Town. The change needs to be made to the online and printed Local Plan Policies Map. All other E3 Shopping Areas will remain the same.
2. Change to legend of the policies map: 'E3 Shopping Areas' changed to '**E3 Primary Shopping Areas**'

Currently on the online Policies Map ([Local Plan Policies Map](#)) and on the printed Local Plan Policies Map for Winchester Town it currently shows this:





# Amendment to Policies Map -Showing E3 Primary Shopping Areas



Amendment from 'E3 Shopping Areas' to 'E3 Primary Shopping Areas' in Winchester Town  
Proposed Submission Reg 19 Local Plan Policies Map

© Crown copyright and database rights 2023  
OSAC00000217. You are permitted to use  
this data solely to enable you to respond to, or  
informed with, the organisation that provided  
you with the data. You are not permitted to  
copy, sub-license, distribute or sell any of this  
data to third parties in any form.

**PM166** – this additional proposed modifications is to the legend on the online and printed Local Plan Policies Map to change as follows: ~~Town Centre (E3), Local Centre (E3), and District Centre (E3)~~. to combine them into one layer labelled as: **‘E3 Town/District/Local Centre’**  
There is no change to the layers themselves, the change is only to the colour of the layer and the title on the legend on the policies map.

**PM167** – Amendment to site boundary W4 Land at Courtenay Road with the removal of the footpath and also the belt of trees/hedgerow. This is approximately 8m from the edge of the footpath and the allocated site.

1. The proposed modification amends the site boundary on the online and printed version of the policies map
2. The proposed modification amends the site boundary in the Proposed Submission Local Plan Reg 19 page number 327 inset maps

The policies map currently shows:





## Amendments to map



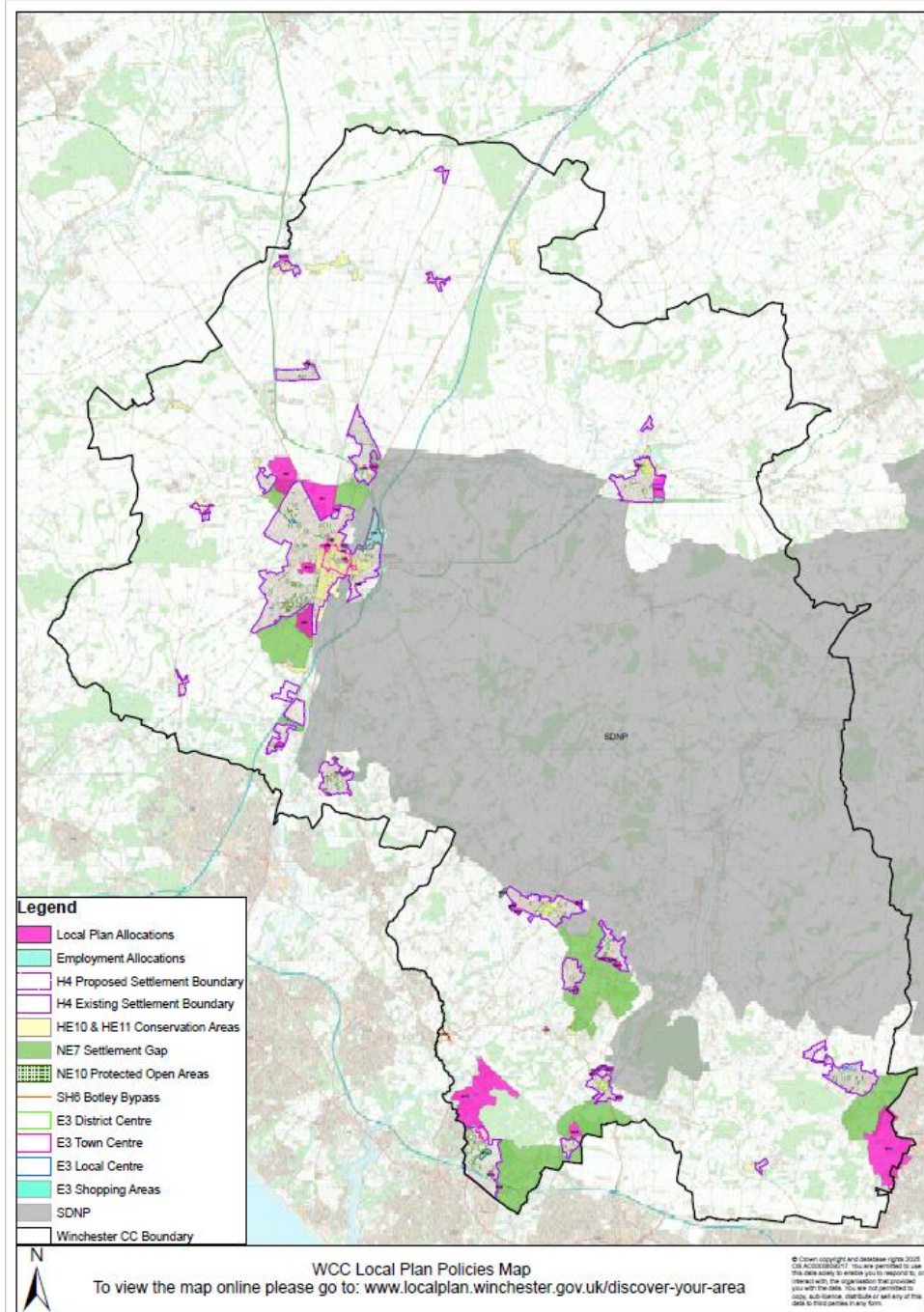
Amendment to W4 Land at Courtenay Road  
Proposed Submission Reg 19 Local Plan Policies Map

© Crown copyright and database right 2025  
OSN: 100050502. You are permitted to use  
this data solely to enable you to respond to, or  
interest with, the organisation that provided  
you with the data. You are not permitted to  
copy, retransmit, distribute or use any of this  
data to third parties in any form.



**PM216** - The Local Plan Policies Map has been updated to include new layers which are covered by Policy NE4 – Green and Blue Infrastructure. These new layers include: SSSI (Sites of Special Scientific Interest), SAC (Special Area of Conservation), SPA (Special Protection Area) and Rivers (Blue Corridors), SINC (Sites of Importance for Nature Conservation), RAMSAR and Long Distance Routes.

The policies map currently shows:





## Amendments to map

